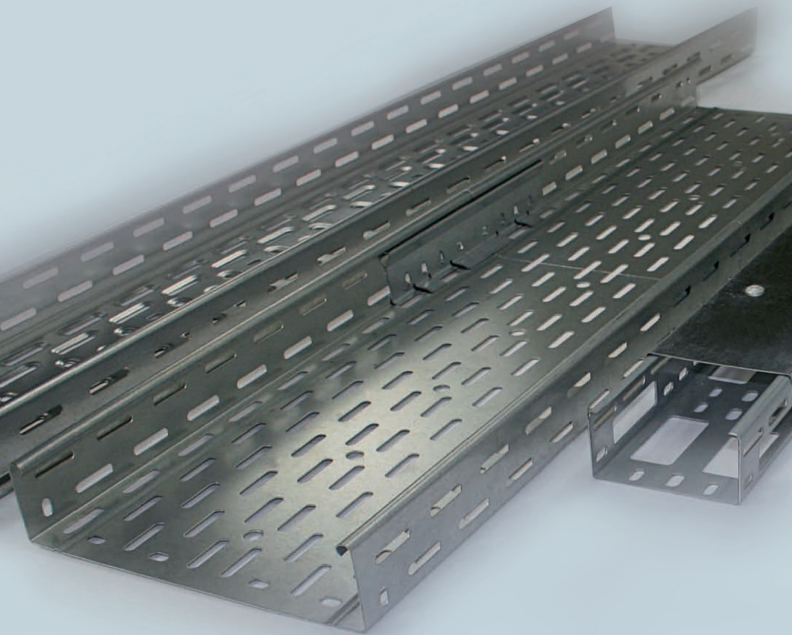



A5 compact NL

KABELDRAAGSYSTEMEN



 Bekijk nu ook ons
productenportaal



Specialist kabeldraagsystemen

Pictogrammen

| | | | |
|--|--|---|--|
|  Nieuw in het assortiment |  35 Kanthoogte in mm |  Halogeenvrij |  Informatie |
|  Uitlooptmodel |  1 Draaddikte in mm |  Siliconenvrij | |
|  Montage instructie |  78 T80 Dekselopening en diepte in mm |  Snelle montage | |
|  Montageverwijzing |  30 Buisdiameter in mm |  Bevestigingsmateriaal | |

Staal

| |
|---|
| B Staal, blank |
| V Staal, galvanisch verzinkt vlgS DIN EN ISO 19598 en DIN EN ISO 2081, blauw gepassiveerd, verbindingselementen elektrolytisch verzinkt vlgS DIN EN ISO 4042 |
| VC Staal, galvanisch verzinkt vlgS DIN EN ISO 19598 en DIN EN ISO 2081, blauw gepassiveerd en elektrostatisch geïsoleerd |
| YZ Staal, galvanisch verzinkt, gepassiveerd, toplaag verzegeld |
| G Staal, galvanisch verzinkt vlgS DIN EN ISO 19598 en DIN EN ISO 2081, dik gepassiveerd, Bevestigingsmiddelen elektrolytisch verzinkt vlgS DIN EN ISO 4042 |
| S Staal, bandverzinkt vlgS DIN EN 10346 |
| F Staal, thermisch verzinkt vlgS DIN EN ISO 1461 (i.p.v. DIN 50 976), montage materiaal: thermisch verzinkt vlgS DIN EN ISO 10684 |
| SB Staal, zwart gepolijst |
| FG Staal, Geomet ® verzinkt |
| DV Staal, draadverzinkt vlgS DIN EN 10244 |
| MS Messing |
| COLOR Staal, band verzinkt en elektrostatisch geïsoleerd |

Roestvaststaal

| | | |
|--|--|---|
| E1 Werkstof Nr.: 1.4016 | A4 E6 Werkstof Nr.: 1.4571/AISI 316Ti | E9 Werkstof Nr.: 1.4362 |
| E2 Werkstof Nr.: 1.4310 | E6 Werkstof Nr.: 1.4529 | E10 Werkstof Nr.: 1.4307/AISI 304L |
| ER E3 Werkstof Nr.: 1.4301/AISI 304 | E6 Roestvaststaal 316/A4 | E11 Werkstof Nr.: 1.4034 |
| E3 Roestvast staal 304/A2 | E7 Werkstof Nr.: 1.4547 | E12 Werkstof Nr.: 1.4462 |
| E4 Werkstof Nr.: 1.4404/AISI 316L | E8 Werkstof Nr.: 1.4430 | |



Niedax Kleinhuis B.V.
Bijsterhuizen 20-05A
6604 LH Wijchen

Tel.: +31 (0) 24 378 85 33
info@niedax.nl
www.niedax.nl



Hoewel aan de samenstelling van deze documentatie de uiterste zorg is besteed, kan geen aansprakelijkheid worden aanvaard voor mogelijke onjuistheden.

Samenstelling: Niedax Kleinhuis B.V. - Wijchen.

Copyright © Mrt.2026 Niedax

vanaf 06/2026

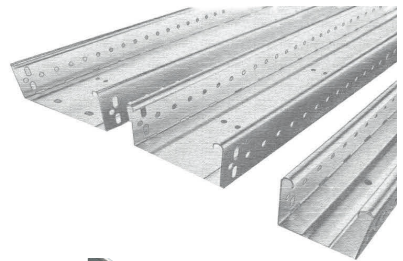
Inhoud

Pagina

| | |
|--------------------------------|----|
| Kabelgoten | 2 |
| MTC draadgoten | 10 |
| Kabelladders | 20 |
| Wandkanalen | 22 |
| Energiezuilen | 26 |
| Kabelkanalen | 28 |
| Overspanningsgoten en -ladders | 32 |
| Alround kabelladder | 36 |

Wij leveren uw kabelgoten:

- In de juiste uitvoering
- In de gewenste maat
- Inclusief snelkoppelingen



Specialist in
kabeldraag
systemen



RLC




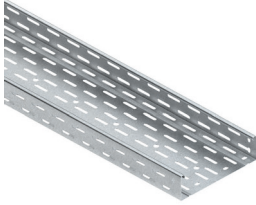
RLUC

Kabelgoten op maat

Kwaliteit die u gewend bent, materiaaldikte 1 mm

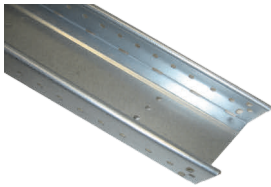
Kabelgoten

| Typenummer | Afm. mm B x H | Art. nummer | |  kg stuk/m |  VPE | Korting groep |
|------------|---------------------|----------------|--|--|--|------------------|
|------------|---------------------|----------------|--|--|--|------------------|


Kabelgoot geperforeerd per lengte incl 2 snelkoppelingen lengte 3 mtr

| | | | | | | |
|------------|------------|----------|--------|------|-----|----|
| S | RLC 60.070 | 70 x 60 | 160149 | 1,44 | 6 m | HN |
| | RLC 60.100 | 100 x 60 | 160141 | 1,63 | 6 m | HN |
| | RLC 60.120 | 120 x 60 | 160150 | 1,74 | 6 m | HN |
| | RLC 60.150 | 150 x 60 | 160147 | 1,92 | 6 m | HN |
| | RLC 60.200 | 200 x 60 | 160142 | 2,22 | 6 m | HN |
| | RLC 60.250 | 250 x 60 | 160148 | 2,78 | 6 m | HN |
| | RLC 60.300 | 300 x 60 | 160143 | 3,10 | 6 m | HN |
| | RLC 60.400 | 400 x 60 | 160144 | 3,76 | 6 m | HN |
| | RLC 60.500 | 500 x 60 | 160145 | 4,41 | 6 m | HN |
| RLC 60.600 | 600 x 60 | 160146 | 5,07 | 6 m | HN | |

d = 1 mm

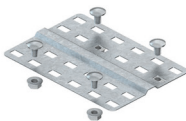


Kabelgoot per lengte incl 2 snelkoppelingen lengte 3 mtr

| | | | | | | |
|-------------|-------------|----------|--------|------|-----|----|
| S | RLUC 60.070 | 70 x 60 | 160159 | 1,44 | 6 m | HN |
| | RLUC 60.100 | 100 x 60 | 160151 | 1,63 | 6 m | HN |
| | RLUC 60.120 | 120 x 60 | 160160 | 1,74 | 6 m | HN |
| | RLUC 60.150 | 150 x 60 | 160157 | 1,92 | 6 m | HN |
| | RLUC 60.200 | 200 x 60 | 160152 | 2,22 | 6 m | HN |
| | RLUC 60.250 | 250 x 60 | 160158 | 2,78 | 6 m | HN |
| | RLUC 60.300 | 300 x 60 | 160153 | 3,10 | 6 m | HN |
| | RLUC 60.400 | 400 x 60 | 160154 | 3,76 | 6 m | HN |
| | RLUC 60.500 | 500 x 60 | 160155 | 4,41 | 6 m | HN |
| RLUC 60.600 | 600 x 60 | 160156 | 5,07 | 6 m | HN | |


d = 1 mm


Snelkoppelplaat

| | | | | | | |
|----------|--------|----------|--------|------|-------|----|
| S | RVC 60 | 250 x 60 | 161520 | 0,17 | 10 st | HN |
|----------|--------|----------|--------|------|-------|----|


Bodemkoppeling incl. 4 x FLM 6x12 

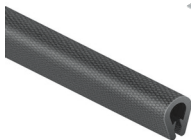
| | | | | | | |
|----------|----------|----------|--------|------|-------|----|
| S | RSLC 400 | 339 x 98 | 161654 | 0,27 | 10 st | HN |
| | RSLC 500 | 439 x 98 | 161655 | 0,33 | 10 st | HN |
| | RSLC 600 | 539 x 98 | 161656 | 0,40 | 10 st | HN |


Scheidingschot incl. 4 x FLM 6x12 per lengte  lengte 3 mtr

| | | | | | | |
|----------|-------|---------|--------|------|------|----|
| S | RW 60 | 24 x 55 | 161247 | 0,50 | 30 m | HN |
|----------|-------|---------|--------|------|------|----|

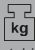


Scheidingschothouder enkel geschikt voor RLC

| | | | | | | |
|----------|---------|---------|--------|------|-------|----|
| S | RTPH 50 | 59 x 83 | 161250 | 0,03 | 20 st | HN |
|----------|---------|---------|--------|------|-------|----|


Kantband

| | | | | | | |
|----------|------|---------|--------|------|------|----|
| S | RKBA | 10 x 14 | 161830 | 0,03 | 10 m | HN |
|----------|------|---------|--------|------|------|----|

Kabelgoten

| Typenummer | Afm. mm B x H | Art. nummer | F L/2 kN |  kg stuk/m |  VPE | Korting groep |
|------------|---------------------|----------------|----------------|--|---|------------------|
|------------|---------------------|----------------|----------------|--|---|------------------|


Draadpendel incl. moeren en sluitringen

| | | | | | | | |
|----------|-------------|----------|--------|--|------|-------|----|
| S | Draadpendel | M10 200 | 150832 | | 0,16 | 10 st | HN |
| | Draadpendel | M10 300 | 150833 | | 0,21 | 10 st | HN |
| | Draadpendel | M10 500 | 150835 | | 0,31 | 10 st | HN |
| | Draadpendel | M10 1000 | 150840 | | 0,56 | 10 st | HN |
| | Draadpendel | M10 2000 | 150814 | | 1,06 | 10 st | HN |


Open C-beugel

| | | | | | | | |
|----------|----------|----------|--------|------|-------|-------|----|
| S | ZCB 070 | 25 x 160 | 150385 | 0,6 | 0,53 | 10 st | HN |
| | ZCB 100 | 25 x 160 | 150381 | 0,6 | 0,61 | 10 st | HN |
| | ZCB 120 | 25 x 160 | 150386 | 0,6 | 0,66 | 10 st | HN |
| | ZCB 150 | 25 x 160 | 150387 | 0,6 | 0,74 | 10 st | HN |
| | ZCB 200 | 25 x 160 | 150382 | 0,6 | 0,87 | 10 st | HN |
| | ZCB 250 | 25 x 160 | 150388 | 0,6 | 0,99 | 10 st | HN |
| | ZCB 300 | 25 x 160 | 150383 | 0,6 | 1,13 | 10 st | HN |
| ZCB 400 | 30 x 160 | 150384 | 0,2 | 1,67 | 10 st | HN | |


2 Punts ophanging incl. 2 x FLM 6x12 

| | | | | | | | |
|----------|--------|--------|--------|------|-------|-------|----|
| S | TW 100 | 98 | 150391 | | 0,11 | 10 st | HN |
| | TW 150 | 148 | 150381 | | 0,16 | 10 st | HN |
| | TW 200 | 190 | 150392 | | 0,19 | 10 st | HN |
| | TW 250 | 240 | 150387 | | 0,24 | 10 st | HN |
| | TW 300 | 290 | 150393 | | 0,28 | 10 st | HN |
| | TW 350 | 340 | 150388 | | 0,33 | 10 st | HN |
| | TW 400 | 470 | 150394 | | 0,46 | 10 st | HN |
| | TW 500 | 570 | 150395 | | 0,55 | 10 st | HN |
| TW 600 | 670 | 150396 | | 0,65 | 10 st | HN | |




Ophangbeugel alleen voor RLC kabelgoot

| | | | | | | | |
|----------|---------|-----|--------|--|------|-------|----|
| S | RCB 070 | 70 | 161639 | | 0,09 | 10 st | HN |
| | RCB 100 | 100 | 161631 | | 0,11 | 10 st | HN |
| | RCB 120 | 120 | 161640 | | 0,13 | 10 st | HN |
| | RCB 150 | 150 | 161637 | | 0,15 | 10 st | HN |
| | RCB 200 | 200 | 161632 | | 0,23 | 10 st | HN |
| | RCB 250 | 250 | 161638 | | 0,28 | 10 st | HN |
| | RCB 300 | 300 | 161633 | | 0,33 | 10 st | HN |


Inschuifbeugel

| | | | | | | | |
|----------|------------|----------|--------|--|------|-------|----|
| S | RTU 60.070 | 67 x 54 | 161649 | | 0,16 | 10 st | HN |
| | RTU 60.100 | 97 x 54 | 161641 | | 0,18 | 10 st | HN |
| | RTU 60.120 | 117 x 54 | 161650 | | 0,20 | 10 st | HN |
| | RTU 60.150 | 147 x 54 | 161647 | | 0,22 | 10 st | HN |
| | RTU 60.200 | 197 x 54 | 161642 | | 0,27 | 10 st | HN |
| | RTU 60.250 | 247 x 54 | 161648 | | 0,32 | 10 st | HN |
| | RTU 60.300 | 297 x 54 | 161643 | | 0,37 | 10 st | HN |
| | RTU 60.400 | 397 x 54 | 161644 | | 0,45 | 10 st | HN |

Kabelgoten


| Typennummer | Afm. mm L x H x B | Art. nummer | Belast F= L/2 kN |  kg stuk/m |  VPE | Korting groep |
|-------------|-------------------------|----------------|------------------------|---|---|------------------|
|-------------|-------------------------|----------------|------------------------|---|---|------------------|

Wandconsole incl. 2 x FLM 6 x 12 


| | | | | | | | |
|----------|----------|----------|--------|-----|------|-------|----|
| S | KTAM 100 | 110 x 60 | 150671 | 1,2 | 0,17 | 10 st | HN |
| | KTAM 150 | 160 x 60 | 150677 | 1,2 | 0,22 | 10 st | HN |
| | KTAM 200 | 210 x 60 | 150672 | 1,2 | 0,30 | 10 st | HN |
| | KTAM 250 | 260 x 60 | 150678 | 1,2 | 0,37 | 10 st | HN |
| | KTAM 300 | 310 x 60 | 150673 | 1,5 | 0,45 | 10 st | HN |
| | KTAM 400 | 410 x 60 | 150674 | 1,5 | 0,51 | 10 st | HN |
| | KTAM 500 | 510 x 60 | 150675 | 1,2 | 1,07 | 10 st | HN |
| | KTAM 600 | 610 x 60 | 150676 | 1,2 | 1,46 | 10 st | HN |


Wandconsole incl. 2 x FLM 6 x 12F 

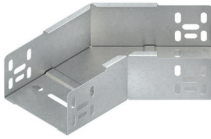

| | | | | | | | |
|----------|---------|--------------|--------|-----|------|-------|----|
| F | KTA 100 | 110 x 45 x40 | 150361 | 2,5 | 0,16 | 10 st | HN |
| | KTA 150 | 160 x 45 x40 | 150351 | 2,5 | 0,19 | 10 st | HN |
| | KTA 200 | 210 x 55 x40 | 150362 | 2,5 | 0,27 | 10 st | HN |
| | KTA 250 | 260 x 55 x40 | 150352 | 2,5 | 0,32 | 10 st | HN |
| | KTA 300 | 310 x 65 x50 | 150363 | 2,5 | 0,59 | 10 st | HN |
| | KTA 350 | 360 x 65 x50 | 150353 | 2,5 | 0,66 | 10 st | HN |
| | KTA 400 | 410 x 75 x50 | 150364 | 2,5 | 0,79 | 10 st | HN |
| | KTA 450 | 460 x 75 x50 | 150354 | 2,5 | 0,88 | 10 st | HN |
| | KTA 500 | 510 x 90 x50 | 150365 | 2,5 | 1,11 | 10 st | HN |
| | KTA 550 | 560 x 90 x50 | 150355 | 2,5 | 1,27 | 10 st | HN |
| | KTA 600 | 610 x 90 x50 | 150366 | 2,5 | 1,34 | 10 st | HN |

Wandconsole incl. 2 x FLM 6 x 12F 

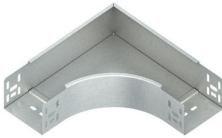

| | | | | | | | |
|----------|-----------|------------|--------|---|------|-------|----|
| F | KTAS 100 | 130 x 113 | 150371 | 5 | 0,90 | 10 st | HN |
| | KTAS 200 | 230 x 113 | 150372 | 5 | 1,09 | 10 st | HN |
| | KTAS 300 | 330 x 113 | 150373 | 5 | 1,31 | 10 st | HN |
| | KTAS 400 | 430 x 113 | 150374 | 5 | 1,55 | 10 st | HN |
| | KTAS 500 | 530 x 150 | 150375 | 5 | 1,98 | 10 st | HN |
| | KTAS 600 | 630 x 150 | 150376 | 5 | 2,27 | 10 st | HN |
| | KTAS 700 | 730 x 150 | 150377 | 5 | 3,03 | 10 st | HN |
| | KTAS 800 | 830 x 195 | 150378 | 5 | 3,64 | 10 st | HN |
| | KTAS 900 | 930 x 195 | 150379 | 5 | 4,10 | 10 st | HN |
| | KTAS 1000 | 1030 x 195 | 150380 | 5 | 4,58 | 10 st | HN |

Kabelgoten

| Typenummer | Afm. mm B x H | Art. nummer |  kg stuk/m |  VPE | Korting groep |
|------------|---------------------|----------------|--|---|------------------|
|------------|---------------------|----------------|--|---|------------------|

Bocht 45° inclusief FLM 6 x 12 montageset 



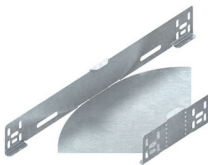
| | | | | | | |
|----------|------------|----------|--------|------|------|----|
| S | RBA 60.100 | 102 x 60 | 161701 | 0,43 | 1 st | HN |
| | RBA 60.150 | 152 x 60 | 161707 | 0,60 | 1 st | HN |
| | RBA 60.200 | 202 x 60 | 161702 | 0,76 | 1 st | HN |
| | RBA 60.250 | 252 x 60 | 161708 | 0,90 | 1 st | HN |
| | RBA 60.300 | 302 x 60 | 161703 | 1,09 | 1 st | HN |
| | RBA 60.400 | 402 x 60 | 161704 | 1,52 | 1 st | HN |
| | RBA 60.500 | 502 x 60 | 161705 | 2,05 | 1 st | HN |
| | RBA 60.600 | 602 x 60 | 161706 | 2,60 | 1 st | HN |

Bocht 90° inclusief FLM 6 x 12 montageset 


| | | | | | | |
|----------|------------|----------|--------|------|------|----|
| S | RES 60.070 | 72 x 60 | 161019 | 0,75 | 1 st | HN |
| | RES 60.100 | 102 x 60 | 161011 | 0,86 | 1 st | HN |
| | RES 60.120 | 122 x 60 | 161020 | 0,98 | 1 st | HN |
| | RES 60.150 | 152 x 60 | 161017 | 1,16 | 1 st | HN |
| | RES 60.200 | 202 x 60 | 161012 | 1,60 | 1 st | HN |
| | RES 60.250 | 252 x 60 | 161018 | 1,99 | 1 st | HN |
| | RES 60.300 | 302 x 60 | 161013 | 2,38 | 1 st | HN |
| | RES 60.400 | 402 x 60 | 161014 | 3,34 | 1 st | HN |
| | RES 60.500 | 502 x 60 | 161015 | 4,46 | 1 st | HN |
| | RES 60.600 | 602 x 60 | 161016 | 5,74 | 1 st | HN |

Aanzethoekstuk inclusief FLM 6 x 12 montageset 


| | | | | | | |
|----------|--------|----|--------|------|------|----|
| S | REK 60 | 60 | 161372 | 0,31 | 1 st | HN |
|----------|--------|----|--------|------|------|----|


Hoekstuk instelbaar inclusief FLM 6 x 12 montageset 


| | | | | | | |
|----------|-------------|----------|--------|------|------|----|
| S | RBAV 60.070 | 70 x 60 | 161739 | 0,37 | 1 st | HN |
| | RBAV 60.100 | 100 x 60 | 161731 | 0,44 | 1 st | HN |
| | RBAV 60.120 | 120 x 60 | 161740 | 0,49 | 1 st | HN |
| | RBAV 60.150 | 150 x 60 | 161737 | 0,58 | 1 st | HN |
| | RBAV 60.200 | 200 x 60 | 161732 | 0,74 | 1 st | HN |
| | RBAV 60.250 | 250 x 60 | 161738 | 0,91 | 1 st | HN |
| | RBAV 60.300 | 300 x 60 | 161733 | 1,15 | 1 st | HN |
| | RBAV 60.400 | 400 x 60 | 161734 | 1,67 | 1 st | HN |
| | RBAV 60.500 | 500 x 60 | 161735 | 2,37 | 1 st | HN |
| | RBAV 60.600 | 600 x 60 | 161736 | 3,16 | 1 st | HN |

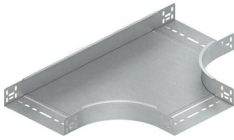
Aftakstuk inclusief FLM 6 x 12 montageset 


| | | | | | | |
|----------|------------|----------|--------|------|------|----|
| S | RTA 60.070 | 72 x 60 | 161099 | 0,75 | 1 st | HN |
| | RTA 60.100 | 102 x 60 | 161091 | 0,79 | 1 st | HN |
| | RTA 60.120 | 122 x 60 | 161100 | 0,82 | 1 st | HN |
| | RTA 60.150 | 152 x 60 | 161097 | 0,87 | 1 st | HN |
| | RTA 60.200 | 202 x 60 | 161092 | 0,95 | 1 st | HN |
| | RTA 60.250 | 252 x 60 | 161098 | 1,03 | 1 st | HN |
| | RTA 60.300 | 302 x 60 | 161093 | 1,13 | 1 st | HN |
| | RTA 60.400 | 402 x 60 | 161094 | 1,29 | 1 st | HN |
| | RTA 60.500 | 502 x 60 | 161095 | 1,46 | 1 st | HN |
| | RTA 60.600 | 602 x 60 | 161096 | 1,62 | 1 st | HN |

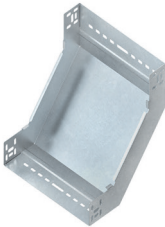
Kabelgoten

| Typenummer | Afm. mm B x H | Art. nummer | |  kg stuk/m |  VPE | Korting groep |
|------------|---------------------|----------------|--|--|--|------------------|
|------------|---------------------|----------------|--|--|--|------------------|

T-stuk instelbaar inclusief FLM 6 x 12 montageset

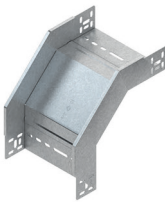


| | | | | | | |
|------------|------------|----------|--------|------|------|----|
| S | RTS 60.070 | 72 x 60 | 161059 | 0,98 | 1 st | HN |
| | RTS 60.100 | 102 x 60 | 161051 | 1,15 | 1 st | HN |
| | RTS 60.120 | 122 x 60 | 161060 | 1,27 | 1 st | HN |
| | RTS 60.150 | 152 x 60 | 161057 | 1,47 | 1 st | HN |
| | RTS 60.200 | 202 x 60 | 161052 | 1,95 | 1 st | HN |
| | RTS 60.250 | 252 x 60 | 161058 | 2,47 | 1 st | HN |
| | RTS 60.300 | 302 x 60 | 161053 | 2,96 | 1 st | HN |
| | RTS 60.400 | 402 x 60 | 161054 | 4,00 | 1 st | HN |
| | RTS 60.500 | 502 x 60 | 161055 | 5,12 | 1 st | HN |
| RTS 60.600 | 602 x 60 | 161056 | 6,49 | 1 st | HN | |



Stijgstuk inclusief FLM 6 x 12 montageset

| | | | | | | |
|----------|------------|----------|--------|------|------|----|
| S | RSD 60.070 | 72 x 60 | 161669 | 0,68 | 1 st | HN |
| | RSD 60.100 | 102 x 60 | 161661 | 0,78 | 1 st | HN |
| | RSD 60.120 | 122 x 60 | 161670 | 0,85 | 1 st | HN |
| | RSD 60.150 | 152 x 60 | 161667 | 0,95 | 1 st | HN |
| | RSD 60.200 | 202 x 60 | 161662 | 1,13 | 1 st | HN |
| | RSD 60.250 | 252 x 60 | 161668 | 1,30 | 1 st | HN |
| | RSD 60.300 | 302 x 60 | 161663 | 1,48 | 1 st | HN |
| | RSD 60.400 | 402 x 60 | 161664 | 1,83 | 1 st | HN |
| | RSD 60.500 | 502 x 60 | 161665 | 2,17 | 1 st | HN |
| | RSD 60.600 | 602 x 60 | 161666 | 2,52 | 1 st | HN |



Vervalstuk inclusief FLM 6 x 12 montageset

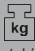

| | | | | | | |
|----------|------------|----------|--------|------|------|----|
| S | RFD 60.070 | 72 x 60 | 161599 | 0,64 | 1 st | HN |
| | RFD 60.100 | 102 x 60 | 161591 | 0,72 | 1 st | HN |
| | RFD 60.120 | 122 x 60 | 161600 | 0,77 | 1 st | HN |
| | RFD 60.150 | 152 x 60 | 161597 | 0,85 | 1 st | HN |
| | RFD 60.200 | 202 x 60 | 161592 | 0,99 | 1 st | HN |
| | RFD 60.250 | 252 x 60 | 161598 | 1,13 | 1 st | HN |
| | RFD 60.300 | 302 x 60 | 161593 | 1,26 | 1 st | HN |
| | RSD 60.400 | 402 x 60 | 161594 | 1,53 | 1 st | HN |
| | RFD 60.500 | 502 x 60 | 161595 | 1,80 | 1 st | HN |
| | RFD 60.600 | 602 x 60 | 161596 | 2,07 | 1 st | HN |



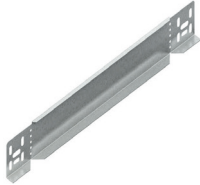
Verticaal instelbare koppeling inclusief FLM 6 x 12 montageset

| | | | | | | |
|----------|---------------|----|--------|------|------|----|
| S | RGV 60 inw. | 47 | 161361 | 0,19 | 1 st | HN |
| | RLGV 60 uitw. | 60 | 161961 | 0,20 | 1 st | HN |
| | RGVA 60 uitw. | 60 | 161364 | 0,27 | 1 st | HN |

Kabelgoten

| Typenummer | Afm. mm B x H | Art. nummer | |  kg stuk/m |  VPE | Korting groep |
|------------|---------------------|----------------|--|--|---|------------------|
|------------|---------------------|----------------|--|--|---|------------------|

Eind/verloopplaat inclusief FLM 6 x 12 montageset



| | | | | | | |
|----------|-----------|----------|--------|------|------|----|
| S | RA 60.050 | 50 x 60 | 161320 | 0,11 | 1 st | HN |
| | RA 60.070 | 70 x 60 | 161379 | 0,12 | 1 st | HN |
| | RA 60.120 | 120 x 60 | 161380 | 0,15 | 1 st | HN |
| | RA 60.150 | 150 x 60 | 161327 | 0,17 | 1 st | HN |
| | RA 60.200 | 200 x 60 | 161322 | 0,19 | 1 st | HN |
| | RA 60.250 | 250 x 60 | 161328 | 0,23 | 1 st | HN |
| | RA 60.350 | 350 x 60 | 161329 | 0,29 | 1 st | HN |
| | RA 60.400 | 400 x 60 | 161324 | 0,32 | 1 st | HN |
| | RA 60.500 | 500 x 60 | 161325 | 0,38 | 1 st | HN |
| | RA 60.600 | 600 x 60 | 161326 | 0,44 | 1 st | HN |



Eind/verloopplaat inclusief FLM 6 x 12 montageset

| | | | | | | |
|----------|--------------------------|----------|--------|------|------|----|
| S | RAW 60.100 | 100 x 60 | 161321 | 0,13 | 1 st | HN |
| | RAW 60.200 _{SP} | 200 x 60 | 161515 | 0,19 | 1 st | HN |
| | RAW 60.300 | 300 x 60 | 161323 | 0,26 | 1 st | HN |



DB 10



DBG 10

Plafondbeugel

| | | | | | | |
|----------|--------|--|--------|------|------|----|
| S | DB 10 | | 150941 | 0,10 | 1 st | HN |
| | DBG 10 | | 150943 | 0,17 | 1 st | HN |



Montageplaat inclusief FLM 6 x 12 montageset


| | | | | | | |
|----------|---------|--|--------|------|------|----|
| S | RMP 130 | | 161517 | 0,28 | 1 st | HN |
|----------|---------|--|--------|------|------|----|



Universele bevestiging FLM 6 x 12 montageset separaat bestellen

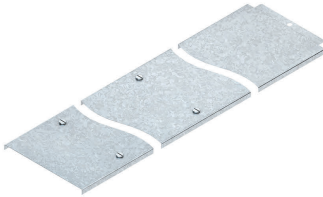
| | | | | | | |
|----------|----------|--|--------|------|------|----|
| S | RUW 60 S | | 161840 | 0,08 | 1 st | HN |
|----------|----------|--|--------|------|------|----|

Kabelgoten

| Typenummer | Afm. mm B x H | Art. nummer | |  stuk/m |  VPE | Korting groep |
|------------|------------------|-------------|--|--|--|---------------|
|------------|------------------|-------------|--|--|--|---------------|

Deksel voor kabelgoot met draaisluiting

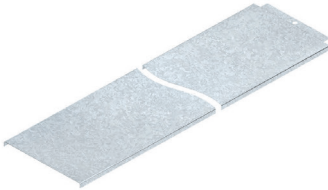
lengte 3 mtr



| | | | | | | |
|----------|---------|----------|--------|------|-----|----|
| S | RDV 070 | 72 x 12 | 161377 | 0,56 | 6 m | HN |
| | RDV 100 | 102 x 12 | 161381 | 0,74 | 6 m | HN |
| | RDV 120 | 122 x 12 | 161378 | 0,86 | 6 m | HN |
| | RDV 150 | 152 x 12 | 161387 | 1,04 | 6 m | HN |
| | RDV 200 | 202 x 12 | 161382 | 1,34 | 6 m | HN |
| | RDV 250 | 252 x 12 | 161388 | 1,96 | 6 m | HN |
| | RDV 300 | 302 x 12 | 161383 | 2,31 | 6 m | HN |
| | RDV 400 | 402 x 12 | 161384 | 3,36 | 6 m | HN |
| | RDV 500 | 502 x 12 | 161385 | 4,15 | 6 m | HN |
| | RDV 600 | 602 x 12 | 161386 | 4,94 | 6 m | HN |

Deksel voor kabelgoot zonder draaisluiting

lengte 3 mtr



| | | | | | | |
|----------|--------|----------|--------|------|-----|----|
| S | RD 070 | 72 x 12 | 161375 | 0,55 | 6 m | HN |
| | RD 100 | 102 x 12 | 161251 | 0,73 | 6 m | HN |
| | RD 120 | 122 x 12 | 161376 | 0,85 | 6 m | HN |
| | RD 150 | 152 x 12 | 161257 | 1,03 | 6 m | HN |
| | RD 200 | 202 x 12 | 161252 | 1,33 | 6 m | HN |
| | RD 250 | 252 x 12 | 161258 | 1,96 | 6 m | HN |
| | RD 300 | 302 x 12 | 161253 | 2,30 | 6 m | HN |
| | RD 400 | 402 x 12 | 161254 | 3,35 | 6 m | HN |
| | RD 500 | 502 x 12 | 161255 | 4,14 | 6 m | HN |
| | RD 600 | 602 x 12 | 161256 | 4,93 | 6 m | HN |

Deksel voor aftakstuk met draaisluiting



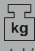

| | | | | | | |
|----------|-----------|----------|--------|------|------|----|
| S | RTADV 070 | 74 x 12 | 161571 | 0,38 | 1 st | HN |
| | RTADV 100 | 104 x 12 | 161451 | 0,43 | 1 st | HN |
| | RTADV 120 | 124 x 12 | 161572 | 0,47 | 1 st | HN |
| | RTADV 150 | 154 x 12 | 161457 | 0,52 | 1 st | HN |
| | RTADV 200 | 104 x 12 | 161452 | 0,61 | 1 st | HN |
| | RTADV 250 | 254 x 12 | 161458 | 0,69 | 1 st | HN |
| | RTADV 300 | 304 x 12 | 161453 | 0,78 | 1 st | HN |
| | RTADV 400 | 404 x 12 | 161454 | 0,95 | 1 st | HN |
| | RTADV 500 | 504 x 12 | 161455 | 1,12 | 1 st | HN |
| | RTADV 600 | 604 x 12 | 161456 | 1,30 | 1 st | HN |

Deksel voor bocht 90° met draaisluiting



| | | | | | | |
|----------|-----------|----------|--------|------|------|----|
| S | RESDV 070 | 74 x 12 | 161573 | 0,29 | 1 st | HN |
| | RESDV 100 | 104 x 12 | 161401 | 0,39 | 1 st | HN |
| | RESDV 120 | 124 x 12 | 161574 | 0,46 | 1 st | HN |
| | RESDV 150 | 154 x 12 | 161407 | 0,70 | 1 st | HN |
| | RESDV 200 | 204 x 12 | 161402 | 0,96 | 1 st | HN |
| | RESDV 250 | 254 x 12 | 161408 | 1,27 | 1 st | HN |
| | RESDV 300 | 304 x 12 | 161403 | 1,61 | 1 st | HN |
| | RESDV 400 | 404 x 12 | 161404 | 2,39 | 1 st | HN |
| | RESDV 500 | 504 x 12 | 161405 | 3,68 | 1 st | HN |
| | RESDV 600 | 604 x 12 | 161406 | 4,86 | 1 st | HN |

Kabelgoten

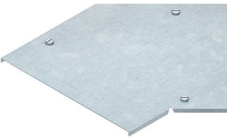
| Typenummer | Afm. mm B x H | Art. nummer | |  kg stuk/m |  VPE | Korting groep |
|------------|---------------------|----------------|--|--|---|------------------|
|------------|---------------------|----------------|--|--|---|------------------|

Deksel voor stijg/vervalstuk met draaisluiting


| | | | | | | |
|----------|------------|----------|--------|------|------|----|
| S | RFSDDV 070 | 74 x 12 | 161589 | 0,14 | 1 st | HN |
| | RFSDDV 100 | 104 x 12 | 161581 | 0,19 | 1 st | HN |
| | RFSDDV 120 | 124 x 12 | 161590 | 0,21 | 1 st | HN |
| | RFSDDV 150 | 154 x 12 | 161587 | 0,25 | 1 st | HN |
| | RFSDDV 200 | 104 x 12 | 161582 | 0,32 | 1 st | HN |
| | RFSDDV 250 | 254 x 12 | 161588 | 0,39 | 1 st | HN |
| | RFSDDV 300 | 304 x 12 | 161583 | 0,46 | 1 st | HN |
| | RFSDDV 400 | 404 x 12 | 161584 | 0,60 | 1 st | HN |
| | RFSDDV 500 | 504 x 12 | 161585 | 0,74 | 1 st | HN |
| | RFSDDV 600 | 604 x 12 | 161586 | 0,88 | 1 st | HN |

Deksel voor T-stuk met draaisluiting


| | | | | | | |
|----------|-----------|----------|--------|------|------|----|
| S | RTSDV 070 | 74 x 12 | 161575 | 0,63 | 1 st | HN |
| | RTSDV 100 | 104 x 12 | 161551 | 0,72 | 1 st | HN |
| | RTSDV 120 | 124 x 12 | 161576 | 0,86 | 1 st | HN |
| | RTSDV 150 | 154 x 12 | 161557 | 1,05 | 1 st | HN |
| | RTSDV 200 | 104 x 12 | 161552 | 1,42 | 1 st | HN |
| | RTSDV 250 | 254 x 12 | 161558 | 1,83 | 1 st | HN |
| | RTSDV 300 | 304 x 12 | 161553 | 2,27 | 1 st | HN |
| | RTSDV 400 | 404 x 12 | 161554 | 3,29 | 1 st | HN |
| | RTSDV 500 | 504 x 12 | 161555 | 4,45 | 1 st | HN |
| | RTSDV 600 | 604 x 12 | 161556 | 5,78 | 1 st | HN |

Deksel bocht 45° met draaisluiting


| | | | | | | |
|----------|-----------|----------|--------|------|------|----|
| S | RBADV 100 | 72 x 12 | 161391 | 0,25 | 1 st | HN |
| | RBADV 150 | 102 x 12 | 161397 | 0,37 | 1 st | HN |
| | RBADV 200 | 122 x 12 | 161392 | 0,51 | 1 st | HN |
| | RBADV 250 | 152 x 12 | 161398 | 0,67 | 1 st | HN |
| | RBADV 300 | 202 x 12 | 161393 | 0,84 | 1 st | HN |
| | RBADV 400 | 252 x 12 | 161394 | 1,23 | 1 st | HN |
| | RBADV 500 | 302 x 12 | 161395 | 1,69 | 1 st | HN |
| | RBADV 600 | 402 x 12 | 161396 | 2,21 | 1 st | HN |

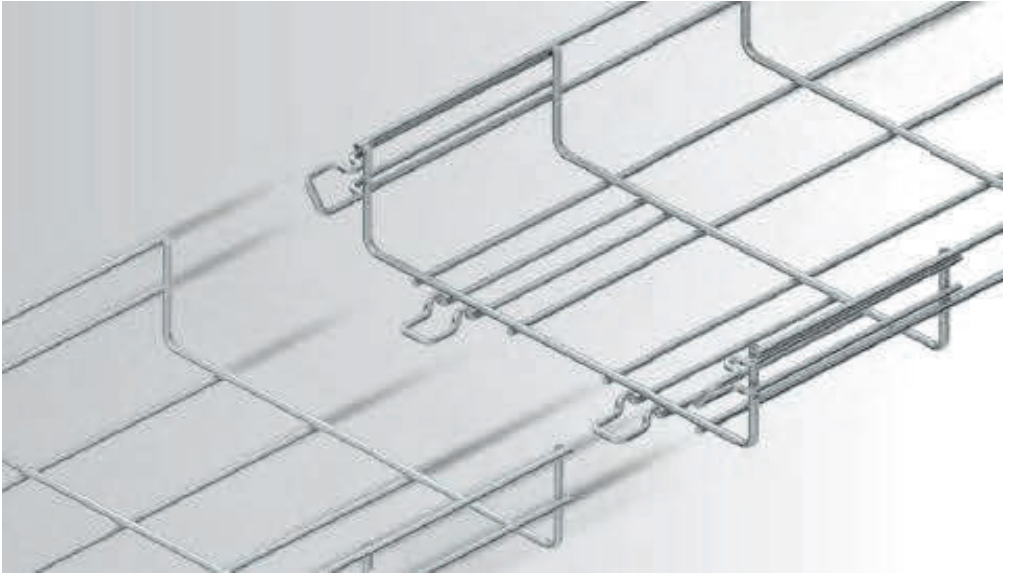

Dekselclip

| | | | | | | |
|-----------|--------|---------|--------|------|------|----|
| E2 | RDHF 9 | 40 x 11 | 165832 | 0,05 | 1 st | HN |
|-----------|--------|---------|--------|------|------|----|

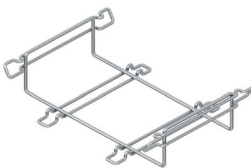
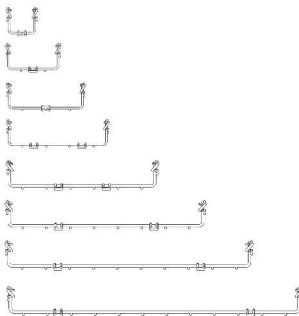
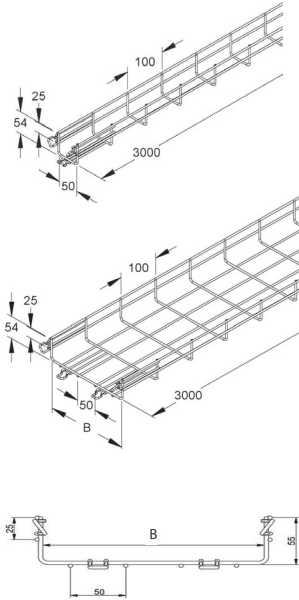

Dekselklem

| | | | | | | |
|-----------|---------|---------|--------|------|------|----|
| E2 | RDHK 60 | 22 x 58 | 165839 | 0,02 | 1 st | HN |
|-----------|---------|---------|--------|------|------|----|

MTC draadgoten



MTC draadgoten

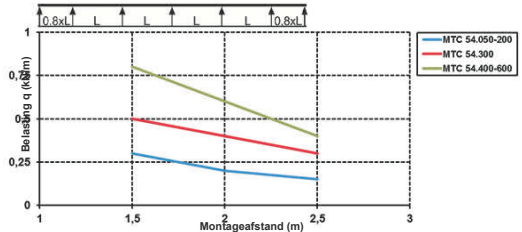


Staaldraadgoot

U-vormig versterkte uitvoering met gepuntlaste staaldraden en aangeb. koppeling

| Model-Nr. | Breed B binnen maat mm | Draad-Ø lengte mm | Draad-Ø breed mm | EAN 36 1498 | Gewicht in kg per 100 m | Kleinste VPE | Art.nr Niedax NL | Korting groep |
|------------------|---------------------------------|-------------------------|------------------------|-------------------|-------------------------------|-----------------|------------------------|------------------|
| V MTC 54.050 | 50 | 3,90 | 3,90 | 7112600 | 64,5 | 3m | 168260 | HN |
| V MTC 54.100 | 100 | 3,90 | 3,90 | 7112778 | 78,7 | 3m | 168261 | |
| V MTC 54.150 | 150 | 3,90 | 3,90 | 7112846 | 93,7 | 3m | 168267 | |
| V MTC 54.200 | 200 | 3,90 | 3,90 | 7112914 | 107,9 | 3m | 168262 | |
| V MTC 54.300 | 300 | 4,82 | 4,82 | 7113140 | 209,7 | 3m | 168263 | |
| V MTC 54.400 | 400 | 4,82 | 5,82 | 7113218 | 287,2 | 3m | 168264 | |
| V MTC 54.500 | 500 | 4,82 | 5,82 | 7113386 | 337,5 | 3m | 168265 | |
| V MTC 54.600 | 600 | 4,82 | 5,82 | 7113454 | 387,7 | 3m | 168266 | |
| F MTC 54.050 F | 50 | 3,90 | 3,90 | 7120698 | 71,0 | 3m | 168270 | HN |
| F MTC 54.100 F | 100 | 3,90 | 3,90 | 7120766 | 86,6 | 3m | 168271 | |
| F MTC 54.150 F | 150 | 3,90 | 3,90 | 7120834 | 103,0 | 3m | 168277 | |
| F MTC 54.200 F | 200 | 3,90 | 3,90 | 7120902 | 118,7 | 3m | 168272 | |
| F MTC 54.300 F | 300 | 4,82 | 4,82 | 7121138 | 230,7 | 3m | 168273 | |
| F MTC 54.400 F | 400 | 4,82 | 5,82 | 7121206 | 315,9 | 3m | 168274 | |
| F MTC 54.500 F | 500 | 4,82 | 5,82 | 7121374 | 371,2 | 3m | 168275 | |
| F MTC 54.600 F | 600 | 4,82 | 5,82 | 7121442 | 426,4 | 3m | 168276 | |
| E3 MTC 54.050 ER | 50 | 3,90 | 3,90 | 7130734 | 65,9 | 3m | 168280 | HN |
| E3 MTC 54.100 ER | 100 | 3,90 | 3,90 | 7130802 | 80,4 | 3m | 168281 | |
| E3 MTC 54.150 ER | 150 | 3,90 | 3,90 | 7130970 | 95,7 | 3m | 168287 | |
| E3 MTC 54.200 ER | 200 | 3,90 | 3,90 | 7131106 | 110,2 | 3m | 168282 | |
| E3 MTC 54.300 ER | 300 | 4,82 | 4,82 | 7131342 | 214,3 | 3m | 168283 | |
| E3 MTC 54.400 ER | 400 | 4,82 | 5,82 | 7131656 | 293,4 | 3m | 168284 | |
| E3 MTC 54.500 ER | 500 | 4,82 | 5,82 | 7131892 | 344,8 | 3m | 168285 | |
| E3 MTC 54.600 ER | 600 | 4,82 | 5,82 | 7132196 | 396,1 | 3m | 168286 | |
| E4 MTC 54.050 A4 | 50 | 3,90 | 3,90 | 7140634 | 65,9 | 3m | 168290 | |
| E4 MTC 54.100 A4 | 100 | 3,90 | 3,90 | 7140702 | 80,4 | 3m | 168291 | |
| E4 MTC 54.150 A4 | 150 | 3,90 | 3,90 | 7140870 | 95,7 | 3m | 168297 | |
| E4 MTC 54.200 A4 | 200 | 3,90 | 3,90 | 7140948 | 110,2 | 3m | 168292 | |
| E4 MTC 54.300 A4 | 300 | 4,82 | 4,82 | 7141174 | 214,3 | 3m | 168293 | |
| E4 MTC 54.400 A4 | 400 | 4,82 | 5,82 | 7141242 | 293,4 | 3m | 168294 | |
| E4 MTC 54.500 A4 | 500 | 4,82 | 5,82 | 7141310 | 344,8 | 3m | 168295 | |
| E4 MTC 54.600 A4 | 600 | 4,82 | 5,82 | 7141488 | 396,1 | 3m | 168296 | |

Belastingsdiagram: q = gelijkmatig verdeelde kabelast (getest vgs DIN EN IEC 61537)



De in het diagram aangegeven belastingen zijn onafhankelijk van de plaats van de verbindingen



MTC Koppelgoot Roestvaststaal

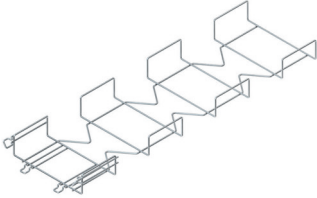
U-vormige draadgoot met vaste snelkoppelingen aan 2 zijden

| Model-Nr. | Hoog H mm | Breed B Binnen maat mm | EAN 36 1498 | Gewicht in kg per 100 St. | Kleinste VPE | Artikel nr NIEDAX NL | Korting Groep |
|--------------------|--------------|---------------------------------|-------------------|------------------------------------|-----------------|----------------------------|------------------|
| E3 MTCQC 54.100 ER | 54 | 100 | 7135005 | 13,78 | 1 St. | 168941 | HN |
| E3 MTCQC 54.150 ER | 54 | 150 | 7135012 | 14,73 | 1 St. | 168947 | |
| E3 MTCQC 54.200 ER | 54 | 200 | 7135029 | 23,84 | 1 St. | 168942 | |
| E3 MTCQC 54.300 ER | 54 | 300 | 7135036 | 36,08 | 1 St. | 168943 | |

Voor een snelkoppeling in de lengte te maken tussen 2 staaldraadgoten

Te gebruiken voorstaaldraadgoten MTC 54.....ER

MTC draadgoten



Bocht instelbaar - horizontaal - verticaal

| | Model-Nr. | Breed B binner mm | EAN 36 1498 | Gewicht in kg per 100 st. | Kleinste VPE | Art.nr. Niedax NL | Korting groep |
|----|----------------|-------------------|----------------|---------------------------|--------------|-------------------|---------------|
| V | MTCE 54.100 | 100 | 7115120 | 33 | 1 St. | 168531 | |
| V | MTCE 54.150 | 150 | 7115366 | 39 | 1 St. | 168537 | HN |
| V | MTCE 54.200 | 200 | 7115507 | 57 | 1 St. | 168532 | |
| V | MTCE 54.300 | 300 | 7115748 | 110 | 1 St. | 168533 | |
| F | MTCE 54.100 F | 100 | 7123118 | 33 | 1 St. | 168581 | |
| F | MTCE 54.150 F | 150 | 7123354 | 39 | 1 St. | 168587 | HN |
| F | MTCE 54.200 F | 200 | 7123590 | 57 | 1 St. | 168582 | |
| F | MTCE 54.300 F | 300 | 7123736 | 110 | 4 St. | 168583 | |
| E4 | MTCE 54.100 A4 | 100 | 7143154 | 33 | 1 St. | 168681 | |
| E4 | MTCE 54.150 A4 | 150 | 7143222 | 39 | 1 St. | 168687 | HN |
| E4 | MTCE 54.200 A4 | 200 | 7143390 | 57 | 1 St. | 168682 | |
| E4 | MTCE 54.300 A4 | 300 | 7143468 | 110 | 1 St. | 168683 | |

Bruikbaar voor draadgoot MTC 54...

Ook leverbaar in 105 mm hoog.



Snelverbinder

| | Model-Nr. | Voor draad diameter mm | EAN 36 1498 | Gewicht in kg per 100 St. | Kleinste VPE | Art.nr. Niedax NL | Korting groep |
|----|-----------|------------------------|----------------|---------------------------|--------------|-------------------|---------------|
| E3 | MTCA 4 ER | 4 | 7136156 | 1 | 50 St. | 168630 | |
| E3 | MTCA 5 ER | 5 | 7136224 | 1 | 50 St. | 168631 | HN |
| E3 | MTCA 6 ER | 6 | 7136392 | 1 | 50 St. | 168632 | |

Voor het samenstellen en verbinden van draadgoot hulpstukken



Universeel verbinder

tweedelig

| | Model-Nr. | Sterkte klasse | EAN 40 1333 | Gewicht in kg per 100 st. | Kleinste VPE | Art.nr. Niedax NL | Korting groep |
|----|---------------|----------------|----------------|---------------------------|--------------|-------------------|---------------|
| V | GRHKM 6X15 | 8.8 | 9012442 | 1,83 | 50 St. | 167429 | |
| F | GRHKM 6X15 F | 8.8 | 9012435 | 1,83 | 50 St. | 167444 | HN |
| E3 | GRHKM 6X15 ER | 70 | 9012428 | 1,82 | 50 St. | 167229 | |

Voor het maken van lengteverbindingen en het samenstellen van hulpstukken



Draadpendelbevestiging

| | Model-Nr. | EAN 40 1333 | Gewicht in kg per 100 St. | Kleinste VPE | Art.nr. Niedax NL | Korting groep |
|----|-------------|----------------|---------------------------|--------------|-------------------|---------------|
| S | GRWGK 10 | 9280797 | 5,8 | 25 St. | 167423 | |
| E3 | GRWGK 10 ER | 9931057 | 5,8 | 25 St. | 167225 | HN |



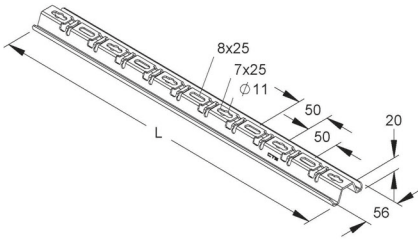
Koppeling vert. instelbaar (Inclusief bevestigingsmateriaal)

| | Model-Nr. | Montagemateriaal incl. | EAN 40 13339 | Gewicht in kg per 100 St. | Kleinste VPE | Art.nr. Niedax NL | Korting groep |
|----|------------|------------------------|-----------------|---------------------------|--------------|-------------------|---------------|
| S | GRGV 50 | 2 GRSM 6 V | 940561 | 11 | 10 St. | 167438 | |
| F | GRGV 50 F | 2 GRSM 6 F | 940585 | 12 | 10 St. | 167439 | HN |
| E3 | GRGV 50 ER | 2 GRSM 6 ER | 940578 | 11 | 10 St. | 167239 | |

Voor het maken van verticale lengteverbindingen (instelbaar).

Per verbinding: 2 stuks

MTC draadgoten



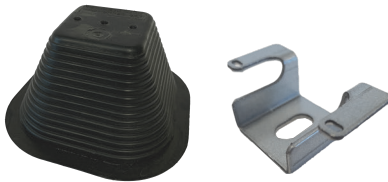
Scheidingschot Met montageklem, schroefloos

| Model-Nr. | Hoog H mm | EAN 36 1498 | Gewicht in kg per 100 m | Kleinste VPE | Art.nr. Niedax NL | Korting groep |
|----------------------|--------------|-------------------|----------------------------------|-----------------|-------------------------|------------------|
| S GTW 30 | 23,5 | 4000603 | 33,0 | 3 m | 168350 | |
| S GTW 54 | 47,5 | 4000610 | 47,0 | 3 m | 168351 | HN |
| S GTW 100 | 95,5 | 4000627 | 99,2 | 3 m | 168353 | |
| F GTW 30 F | 23,5 | 5480602 | 45,0 | 3 m | 168355 | |
| F GTW 54 F | 47,5 | 5480619 | 50,0 | 3 m | 168356 | HN |
| F GTW 100 F | 95,5 | 5480626 | 101,3 | 3 m | 168358 | |
| E3 GTW 30 ER | 23,5 | 5490601 | 30,0 | 3 m | 168360 | |
| E3 GTW 54 ER | 47,5 | 5490618 | 47,0 | 3 m | 168361 | HN |
| E3 GTW 100 ER | 95,5 | 5490625 | 95,0 | 3 m | 168363 | |
| E4 GTW 30 A4 | 23,5 | 5500607 | 30,0 | 3 m | 168365 | |
| E4 GTW 54 A4 | 47,5 | 5490632 | 47,0 | 3 m | 168366 | |
| E4 GTW 100 A4 | 95,5 | 5500621 | 95,0 | 3 m | 168368 | |

Voor het scheiden van kabels en leidingen met verschillende functies en/of spanningen.

Voor staaldraadgoten met een dwarsdraad afstand van 100 mm
Toepasbaar voor: Staaldraadgoten MTC.

De perforatie in de bodem maakt een extra bevestiging mogelijk. Montagemateriaal voor extra bevestiging separaat bestellen.



Dakdrager in losse onderdelen

| Model-Nr. | Hoog H mm | EAN 36 1498 | Gewicht in kg per 100 St. | Kleinste VPE | Art.nr. Niedax NL | Korting groep |
|--------------------------------------|--------------|-------------------|------------------------------------|-----------------|-------------------------|------------------|
| K DT 80.140 M6 dakdrager los | 80 | 0882951 | 100 | 20 St. | 168588 | |
| FG GTMB 25 F montageklem los | 15 | 0829275 | 0,2 | 20 St. | 168579 | HN |
| F TRL 6 x 12 F platbalkopschr | | | | 20 St. | 199919 | |



Dakdrager

Met montageklem

| Model-Nr. | Hoog H mm | EAN 36 1498 | Gewicht in kg per 100 st | Kleinste VPE | Art.nr. Niedax NL | Korting groep |
|------------------------------------|--------------|-------------------|-----------------------------------|-----------------|-------------------------|------------------|
| K Dakdrager 140 x 140 mm | 95 | 0882968 | 104 | 10 st | 168577 | HN |

DT 80.140 dakdrager + montagebeugel GTMB 25 F.

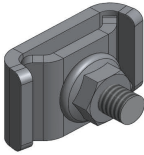
Voor het monteren van draadgoten op daken.

Draadgoot-verbindingstrip

| Model-Nr. | EAN 36 1498 | Gewicht in kg per 100 St. | Kleinste VPE | Art.nr. Niedax NL | Korting groep |
|-----------------------|-------------------|------------------------------------|-----------------|-------------------------|------------------|
| V GTVL 300 | 5520384 | 8 | 25 St. | 168520 | |
| F GTVL 300 F | 5530383 | 8 | 25 St. | 168570 | HN |
| E3 GTVL 300 ER | 5540382 | 8 | 25 St. | 168620 | |
| E4 GTVL 300 A4 | 5550381 | 8 | 25 St. | 168670 | |

Voor het maken van lengteverbindingen en het samenstellen van hulpstukken. Bevestigingsmateriaal apart bestellen.

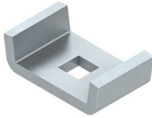
MTC draadgoten



Draadgoot-verbinder

| Model-Nr. | EAN | Gewicht in kg per 100 St. | Kleinste VPE | Art.nr. Niedax NL | Korting groep |
|----------------|---------|---------------------------|--------------|-------------------|---------------|
| | 36 1498 | | | | |
| V GTLV2030 | 5520506 | 2,4 | 50 St. | 168523 | HN |
| FG GTLV2030 F | 5520506 | 2,4 | 50 St. | 168573 | |
| E3 GTLV2030 ER | 5520506 | 2,4 | 50 St. | 168623 | |
| E4 GTLV2030 A4 | 5520506 | 2,4 | 50 St. | 168673 | |

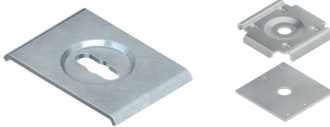
Voor het maken van lengteverbindingen en het samenstellen van hulpstukken.



Draadgoot- klem

| Model-Nr. | EAN | Gewicht in kg per 100 St. | Kleinste VPE | Art.nr. Niedax NL | Korting groep |
|--------------|---------|---------------------------|--------------|-------------------|---------------|
| | 36 1498 | | | | |
| V GTL 30 | 5520436 | 1,5 | 50 St. | 168502 | HN |
| FG GTL 30 F | 5530437 | 1,5 | 50 St. | 168552 | |
| E3 GTL 30 ER | 5540436 | 1,5 | 50 St. | 168602 | |
| E4 GTL 30 A4 | 5550438 | 1,5 | 50 St. | 168652 | |

Voor het maken van lengteverbindingen en het samenstellen van hulpstukken.



Draadgoot-ophangbeugel

| Model-Nr. | EAN | Gewicht in kg per 100 St. | Kleinste VPE | Art.nr. Niedax NL | Korting groep |
|--------------|---------------|---------------------------|--------------|-------------------|---------------|
| | | | | | |
| V GTL 40 | 3614985520232 | 3,6 | 50 St. | 168503 | HN |
| FG GTL 40 F | 3614985530321 | 3,6 | 50 St. | 168553 | |
| E3 GTL 40 ER | 3614985540320 | 4,0 | 50 St. | 168603 | |
| E4 GTL 40 A4 | 3614985550329 | 4,0 | 50 St. | 168653 | |
| S GRKB 10 | 4013339280704 | 10 | 50 St. | 167425 | |
| F GRKB 10 F | 4013339280759 | 10 | 50 St. | 167339 | |

Voor het in het midden ophangen van draadgoten met een maximale breedte van 300 mm en een langsdraadafstand van 50 mm.



Draadgoot-ophangbeugel

| Model-Nr. | EAN | Gewicht in kg per 100 St. | Kleinste VPE | Art.nr. Niedax NL | Korting groep |
|-----------|---------|---------------------------|--------------|-------------------|---------------|
| | 36 1498 | | | | |
| S GTM 8 | 5520858 | 4 | 25 St. | 168509 | HN |
| F GTM 8 F | 5530857 | 4 | 25 St. | 168559 | |

Voor het in het midden ophangen van draadgoten met een maximale breedte van 300 mm.



Draadgoot-multiclip

| Model-Nr. | EAN | Gewicht in kg per 100 St. | Kleinste VPE | Art.nr. Niedax NL | Korting groep |
|-----------------|---------|---------------------------|--------------|-------------------|---------------|
| | 36 1498 | | | | |
| S GTMC 25/50 | 5058235 | 2,0 | 50 St. | 168510 | HN |
| FG GTMC 25/50 F | 5058228 | 1,9 | 50 St. | 168560 | |

Voor een variabele wandbevestiging van draadgoten tot een max. breedte van 100mm/Voor een variabele vloerbevestiging van draadgoten. .

Voor een variabele draadstang bevestiging van draadgoten tot een maximale breedte van 300 mm.

MTC draadgoten



Staaldraadgot-ophangbeugel

| Model-Nr. | EAN | Gewicht in kg per 100 St. | Kleinste VPE | Art.nr. Niedax NL | Korting groep |
|----------------------|---------|---------------------------|--------------|-------------------|---------------|
| | 36 1498 | | | | |
| S GTUT 50 | 5521183 | 7,3 | 10 St. | 168511 | HN |
| FG GTUT 50 F | 5531182 | 7,3 | 10 St. | 168561 | |
| E3 GTUT 50 ER | 5541181 | 7,3 | 10 St. | 168611 | |
| A4 GTUT 50 A4 | 5551180 | 7,3 | 10 St. | 168661 | |

Toepasbaar voor staaldraadgoten MTC 30.050 en MTC 54.050.

Staaldraadgoten Wand- en consolemontage

| Model-Nr. | EAN | Gewicht in kg per 100 St. | Kleinste VPE | Art.nr. Niedax NL | Korting groep |
|-----------------------|---------|---------------------------|--------------|-------------------|---------------|
| | 36 1498 | | | | |
| S GTWAB 50 | 5520360 | 2,6 | 50 St. | 168504 | HN |
| FG GTWAB 50 F | 5530369 | 2,6 | 50 St. | 168554 | |
| E3 GTWAB 50 ER | 5540368 | 3,0 | 50 St. | 168604 | |
| E4 GTWAB 50 A4 | 5550367 | 3,0 | 50 St. | 168654 | |

Voor wandbevestiging van staaldraadgoten. Voor bevestiging van staaldraadgoten op consoles.



Staaldraadgoten- ophangbeugel

| Model-Nr. | Hoog H | Lang L | Afstand A | EAN | Gewicht in kg per 100 St. | Kleinste VPE | Art.nr. Niedax NL | Korting groep |
|-------------------------|--------|--------|-----------|--------|---------------------------|--------------|-------------------|---------------|
| | | | | | | 40 1333 | | |
| S GRHW 30/40 | 71,5 | 51 | 18 | 939367 | 5,00 | 20 St. | 167422 | HN |
| E3 GRHW 30/40 ER | 71,5 | 51 | 18 | 939374 | 5,00 | 20 St. | 167232 | |
| S GRHW 30/60 | 91,5 | 71 | 28 | 939381 | 6,93 | 20 St. | 167448 | |
| E3 GRHW 30/60 ER | 91,5 | 71 | 28 | 939398 | 7,00 | 20 St. | 167233 | |

Voor wandbevestiging.

Toepasbaar voor staaldraadgoten met minimaal 2 draden in de bodem. Tegen ombuigen van de staaldraadgoot een haakschroef GRSM 6... separaat bestellen.



Staaldraadgoten-ophangbeugel

| Model-Nr. | EAN | Gewicht in kg per 100 St. | Kleinste VPE | Art. nr. Niedax NL | Korting groep |
|---------------------|---------|---------------------------|--------------|--------------------|---------------|
| | 36 1498 | | | | |
| S GTAB 8 | 520339 | 7 | 20 St. | 168508 | HN |
| FG GTAB 8 F | 530338 | 7 | 20 St. | 168558 | |
| E3 GTAB 8 ER | 540337 | 7 | 20 St. | 168608 | |
| E4 GTAB 8 A4 | 550336 | 7 | 20 St. | 168658 | |

Voor 2-puntsophanging d.m.v. draadstangen.

Toepasbaar voor staaldraadgoten MTC.



Staaldraadgoten-montagebeugel

| Model-Nr. | EAN | Gewicht in kg per 100 St. | Kleinste VPE | Art.nr. Niedax NL | Korting groep |
|----------------------|---------|---------------------------|--------------|-------------------|---------------|
| | 36 1498 | | | | |
| S GTMB 65 | 5520377 | 8,6 | 20 St. | 168505 | HN |
| FG GTMB 65 F | 5530376 | 8,7 | 20 St. | 168555 | |
| E3 GTMB 65 ER | 5540375 | 9,0 | 20 St. | 168605 | |
| E4 GTMB 65 A4 | 5550374 | 9,0 | 20 St. | 168655 | |

Voor schroefloze wandmontage van staaldraadgoten tot een maximale breedte van 100 mm en voorzien van 2 zijdraden.

Voormiddelpunts montage met draadstang tot een maximale breedte van 300 mm.

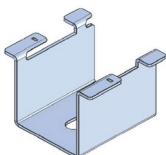
Toepasbaar voor staaldraadgoten MTC.



Staaldraadgoten- afstandsprofiel

| Model-Nr. | EAN | Gewicht in kg per 100 St. | Kleinste VPE | Art.nr. Niedax NL | Korting groep |
|---------------------|---------|---------------------------|--------------|-------------------|---------------|
| | 40 1333 | | | | |
| GA 50.050 ER | 9060641 | 20 St. | 14,0 | 167240 | HN |

Voor schroefloze wandmontage van verticale staaldraadgoten met 50 mm afstand tot de wand voor hygienische schoonmaak. Toepasbaar voor MTC 30.100 t/m MTC 54.100.



MTC draadgoten



Montagebeugel - Profielklem

Incl. kartelmoer vlg. DIN EN 1661.

| Model-Nr. | Draad mm | EAN 40 13339 | Gewicht in kg per 100 St. | Kleinste VPE | Art.nr. Niedax NL | Korting groep |
|---------------|-------------|--------------------|---------------------------------|-----------------|-------------------------|------------------|
| V GRSM 6 | 6 | 280506 | 1,16 | 50 St. | 167428 | HN |
| F GRSM 6 F | 6 | 940554 | 1,16 | 50 St. | 167442 | |
| E3 GRSM 6 ER | 6 | 343799 | 1,15 | 50 St. | 167228 | |
| E3 GRBA 40 ER | | 948390 | 0,58 | 50 St. | 167223 | |

Montageset slotbout

Incl. kartelmoer.



| Model-Nr. | Draad M | Lang L mm | EAN 36 14986 | Gewicht in kg per 100 St. | Kleinste VPE | Art.nr. Niedax NL | Korting groep |
|----------------|------------|-----------------|--------------------|---------------------------------|-----------------|-------------------------|------------------|
| G FLM 6X20 | 6 | 20 | 480038 | 0,9 | 100 St. | 168519 | HN |
| FG FLM 6X20 F | 6 | 20 | 510032 | 0,7 | 100 St. | 168569 | |
| E4 FLM 6X20 A4 | 6 | 20 | 290034 | 0,7 | 100 St. | 168669 | |

Staaldraadgoten console



| Model-Nr. | Hoog H mm | Lang L mm | kracht F bij L/2 kN | EAN 36 1498 | Gewicht in kg per 100 St. | Kleinste VPE | Art.nr. Niedax NL | Korting groep |
|-----------------|-----------------|-----------------|------------------------------|-------------------|---------------------------------|-----------------|-------------------------|------------------|
| S GTTKS 100 | 120 | 165 | 1,30 | 7470014 | 32 | 20 St. | 168701 | HN |
| S GTTKS 150 | 120 | 215 | 1,08 | 7470021 | 39 | 20 St. | 168707 | |
| S GTTKS 200 | 120 | 265 | 0,86 | 7470038 | 45 | 20 St. | 168702 | |
| S GTTKS 300 | 120 | 365 | 0,64 | 7470052 | 63 | 20 St. | 168703 | |
| FG GTTKS 100 F | 120 | 165 | 1,30 | 7480013 | 32 | 20 St. | 168711 | |
| FG GTTKS 150 F | 120 | 215 | 1,08 | 7480020 | 39 | 20 St. | 168717 | |
| FG GTTKS 200 F | 120 | 265 | 0,86 | 7480037 | 43 | 20 St. | 168712 | |
| FG GTTKS 300 F | 120 | 365 | 0,64 | 7480051 | 60 | 20 St. | 168713 | |
| E4 GTTKS 100 A4 | 120 | 165 | 1,30 | 7500018 | 32 | 20 St. | 168731 | |
| E4 GTTKS 150 A4 | 120 | 215 | 1,08 | 7500025 | 38 | 20 St. | 168737 | |
| E4 GTTKS 200 A4 | 120 | 265 | 0,86 | 7500032 | 43 | 20 St. | 168732 | |
| E4 GTTKS 300 A4 | 120 | 365 | 0,64 | 7500056 | 60 | 20 St. | 168733 | |

Voor montage aan plafond als pendel of aan de wand als console.

De aangegeven draagkracht F geldt enkel bij een juiste montage aan de ondergrond.

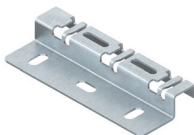
Staaldraadgoten console



| Model-Nr. | Hoog H mm | Lang L mm | EAN 36 1498 | Gewicht in kg per 100 St. | Kleinste VPE | Art.nr. Niedax NL | Korting groep |
|-----------------|-----------------|-----------------|-------------------|---------------------------------|-----------------|-------------------------|------------------|
| S GTTKS 400 | 170 | 465 | 7470069 | 71 | 20 St. | 168704 | HN |
| S GTTKS 500 | 170 | 565 | 7470076 | 87 | 20 St. | 168705 | |
| S GTTKS 600 | 170 | 665 | 7470083 | 99 | 20 St. | 168706 | |
| FG GTTKS 400 F | 170 | 465 | 7480068 | 71 | 20 St. | 168714 | |
| FG GTTKS 500 F | 170 | 565 | 7480075 | 87 | 20 St. | 168715 | |
| FG GTTKS 600 F | 170 | 665 | 7480082 | 99 | 20 St. | 168716 | |
| E4 GTTKS 400 A4 | 170 | 465 | 7500063 | 71 | 20 St. | 168734 | |
| E4 GTTKS 500 A4 | 170 | 565 | 7500070 | 87 | 20 St. | 168735 | |
| E4 GTTKS 600 A4 | 170 | 665 | 7500087 | 99 | 20 St. | 168736 | |

Voor montage aan het plafond.

Staaldraadgoten-afstandsprofiel

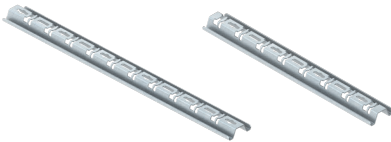


| Model-Nr. | EAN 36 14985 | Gewicht in kg per 100 St. | Kleinste VPE | Art.nr. Niedax NL | Korting groep |
|-------------------|--------------------|---------------------------------|-----------------|-------------------------|------------------|
| S GTZP 30/150 | 521473 | 14 | 10 St. | 168512 | HN |
| F GTZP 30/150 F | 531472 | 14 | 10 St. | 168562 | |
| E4 GTZP 30/150 A4 | 551470 | 14 | 10 St. | 168662 | |

Voor alle staaldraadgoten met een langsdraadafstand van 50 mm.

Het profiel zorgt voor een eenvoudige, prijsgunstige staaldraadgoot montage.

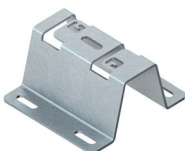
MTC draadgoten



GTEKM
voor droge ruimtes



MTEKM
voor gebruik buiten



Staaldraadgoten-console

| Model-Nr. | Hoog H mm | Lang L mm | kracht F bij L/2 kN | EAN 36 1498 | Gewicht in kg per 100 St. | Kleinste VPE | Art.nr. Niedax NL | Korting groep |
|------------------------|--------------|--------------|------------------------|----------------|---------------------------|--------------|----------------------|------------------|
| S GTTKSU 100 | 183 | 165 | 1,22 | 7470106 | 53 | 20 St. | 168751 | HN |
| S GTTKSU 150 | 183 | 215 | 1,00 | 7470113 | 60 | 20 St. | 168757 | |
| S GTTKSU 200 | 183 | 265 | 0,81 | 7470120 | 67 | 20 St. | 168752 | |
| FG GTTKSU 100 F | 183 | 165 | 1,22 | 7480105 | 53 | 20 St. | 168761 | |
| FG GTTKSU 150 F | 183 | 215 | 1,00 | 7480112 | 60 | 20 St. | 168767 | |
| FG GTTKSU 200 F | 183 | 265 | 0,81 | 7480129 | 67 | 20 St. | 168762 | |

Voor wand- en plafondmontage.

De aangegeven draagkracht F geldt enkel bij een juiste montage aan de ondergrond. Ook leverbaar in A4

Staaldraadgoten-console

| Model-Nr. | Hoog H mm | Lang L mm | kracht F bij L/2 kN | EAN 36 14987 | Gewicht in kg per 100 St. | Kleinste VPE | Art.nr. Niedax NL | Korting groep |
|--------------------------|--------------|--------------|------------------------|-----------------|---------------------------|--------------|----------------------|------------------|
| S GTTKSU 300 | 183 | 365 | 0,64 | 470144 | 85 | 20 St. | 168753 | HN |
| FG GTTKSU 300 F | 183 | 365 | 0,64 | 480143 | 85 | 20 St. | 168763 | |
| S GTTKSU 400 | 183 | 465 | 0,64 | 470151 | 95 | 20 St. | 168754 | |
| FG GTTKSU 400 F | 183 | 465 | 0,64 | 480150 | 95 | 20 St. | 168764 | |
| S GTCB 50/100 | 135 | 123 | 0,2 | 470502 | 20 | 25 St. | 168528 | |
| F GTCB 50/100 ER | 135 | 123 | 0,2 | 480501 | 20 | 25 St. | 168578 | |
| E3 GTCB 50/100 ER | 135 | 123 | 0,2 | 490500 | 20 | 25 St. | 168628 | |
| E4 GTCB 50/100 A4 | 135 | 123 | 0,2 | 500506 | 20 | 25 St. | 168678 | |

Voor wand- en plafondmontage.

De aangegeven draagkracht F geldt enkel bij een juiste montage aan de ondergrond. Ook leverbaar in A4.

Staaldraadgoten-ondersteuningsprofiel

| Model-Nr. | Lang L mm | EAN 36 14987 | Gewicht in kg per 100 St./m | Kleinste VPE | Art.nr. Niedax NL | Korting groep |
|---------------------|--------------|-----------------|-----------------------------|--------------|----------------------|------------------|
| S GTTW 550 | 550 | 471059 | 66,0 | 20 St. | 168826 | HN |
| S GTTW 3 | 3000 | 471110 | 98,5 | 3m | 168803 | |
| F GTTW 3 F | 3000 | 481119 | 98,5 | 3m | 168808 | |
| E4 GTTW 3 A4 | 3000 | 501114 | 98,5 | 3 m | 168813 | |

Voor alle staaldraadgoten.

Staaldraadgoten-aardingsklem

| Model-Nr./Klem-bereik | mm² | EAN 36 1498 | Gewicht in kg per 100 St. | Kleinste VPE | Art.nr. Niedax NL | Korting groep |
|-----------------------|------|----------------|---------------------------|--------------|----------------------|------------------|
| Ms GTEKM 6X25 | 6-35 | 6512118 | 5,1 | 25 St. | 168515 | HN |
| Ms MTEKM 6X25 | 6-25 | 168125 | 3,85 | 20 St. | 171430 | |

Voor de aansluiting van potentiaalvereffening- en aardingsleidingen.

Toepasbaar voor staaldraadgoten. MTC.

R4 M6 x 25 Bout + Moer om GTEKM buiten toe te passen.

Staaldraadgoten-vloerbeugel

| Model-Nr. | EAN 36 1498 | Gewicht in kg per 100 St. | Kleinste VPE | Art.nr. Niedax NL | Korting groep |
|----------------------|----------------|---------------------------|--------------|----------------------|------------------|
| S GTBT 50 | 057979 | 20,8 | 20 St. | 168513 | HN |
| F GTBT 50 F | 057962 | 22,8 | 20 St. | 168563 | |
| E5 GTBT 50 A4 | 057962 | 22,8 | 20 St. | 168663 | |

Voor schroefloze montage van staaldraadgoten op de vloer of tegen het plafond.

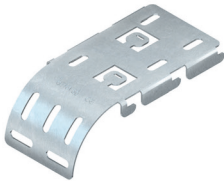
MTC draadgoten



Staaldraadgoten-montageplaat

| Model-Nr. | EAN | Gewicht in kg per 100 St. | Kleinste VPE | Art.nr. Niedax NL | Korting groep |
|---------------|----------|---------------------------|--------------|-------------------|---------------|
| | 36 14985 | | | | |
| S GTMP 135 | 521459 | 16 | 10 St. | 168514 | |
| F GTMP 135 F | 531458 | 16 | 10 St. | 168564 | HN |
| E3 GTMP 135ER | 551456 | 16 | 10 St. | 168614 | |

Schroefloze montageplaat voor las- en aansluitdozen.

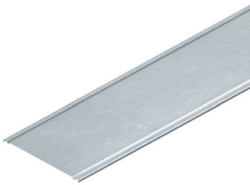


Staaldraadgoten-afbuigplaat

| Model-Nr. | EAN | Gewicht in kg per 100 St. | Kleinste VPE | Art.nr. Niedax NL | Korting groep |
|---------------|----------|---------------------------|--------------|-------------------|---------------|
| | 3614 985 | | | | |
| S GTKA 50 | 521442 | 16,5 | 1 St. | 168525 | |
| F GTKA 50 F | 531441 | 16,5 | 1 St. | 168575 | HN |
| E3 GTKA 50 ER | 541440 | 16,5 | 1 St. | 168625 | |
| E4 GTKA 50 A4 | 551449 | 16,5 | 1 St. | 168675 | |

Voor schroefloze montage.

Voor staaldraadgoten met een dwarsdraadafstand van 100 mm en/of een langsdraadafstand van 50 mm.



Deksel voor staaldraadgoot

| Model-Nr. | Breed B | EAN | Gewicht in kg per 100 St. | Kleinste VPE | Art.nr. Niedax NL | Korting groep | |
|-------------|---------|----------|---------------------------|--------------|-------------------|---------------|---|
| | | 40 13339 | | | | | |
| S GTD 100 | 124 | 057993 | 55,3 | 3 m | 168301 | | Deksel is leverbaar in breedte: 50, 100, 150, 200, 300, 400, 500, 600 mm. En in roestvaststaal ER en A4 |
| S GTD 200 | 224 | 058020 | 114,0 | 3 m | 168302 | | |
| S GTD 300 | 324 | 058044 | 200,0 | 3 m | 168303 | HN | |
| F GTD 100 F | 124 | 057986 | 67,0 | 3 m | 168311 | | |
| F GTD 200 F | 224 | 058013 | 124,8 | 3 m | 168312 | | |
| F GTD 300 F | 324 | 058037 | 220,8 | 3 m | 168313 | | |

Toepasbaar voor U-vormige staaldraadgoot MTC...

Dekselclip GTDC... separaat bestellen.

Als de deksels buiten op de draadgoten gebruikt worden en er sprake is van krachtige windinvloeden, moeten extra maatregelen voor bevestiging op de draadgoot genomen worden.



GTD54/105 ER



GTDC 25 ER

Staaldraadgoten-dekselclip

| Model-Nr. | EAN | Gewicht in kg per 100 St. | Kleinste VPE | Art.nr. Niedax NL | Korting groep | |
|-------------------|---------|---------------------------|--------------|-------------------|---------------|------------------------------------|
| | 36 1498 | | | | | |
| E3 STDC 25 ER | 088379 | 0,4 | 20 St. | 168568 | | t.b.v. 30 mm hoge draadgoot |
| E3 STDC 54/105 ER | 136841 | 0,5 | 20 St. | 168567 | HN | t.b.v. 54 en 105 mm hoge draadgoot |

Voor bevestiging van de deksel voor staaldraadgoten.

Toepasbaar voor staaldraadgootdekset GTD...

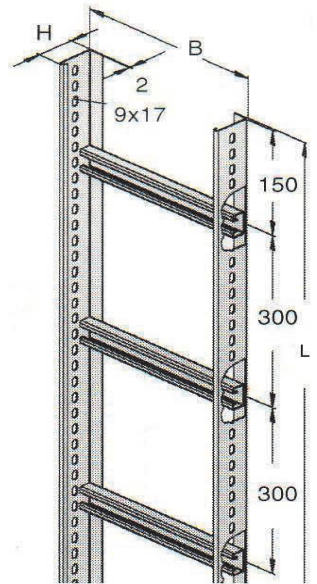
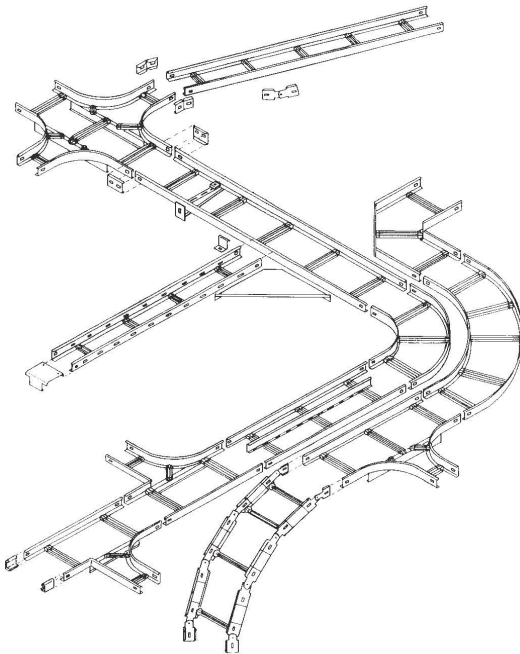
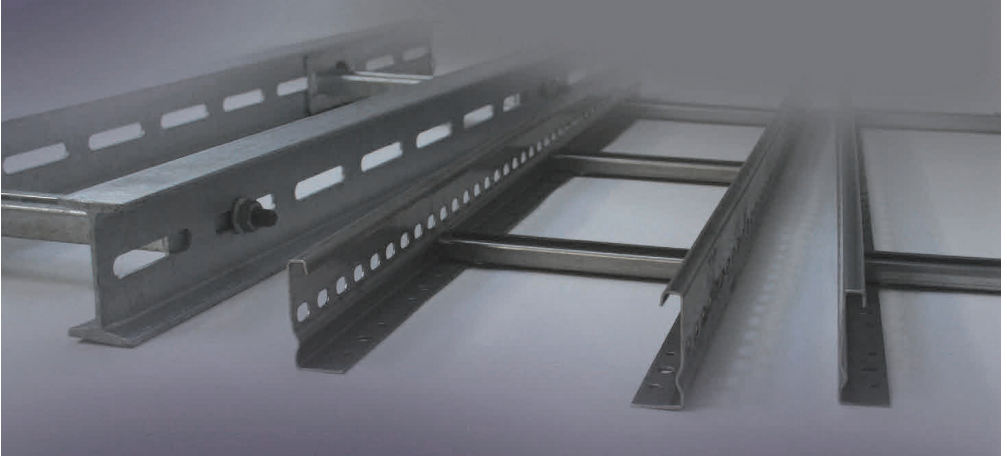


Staaldraadgoten-draadkniptang


| Model-Nr. | EAN | Gewicht in kg per 100 St. | Kleinste VPE | Art.nr. Niedax NL | Korting groep |
|--------------|----------|---------------------------|--------------|-------------------|---------------|
| | 40 13339 | | | | |
| V GTBS 500 V | 057955 | 258,8 | 1 St. | 168517 | HN |

Voor snel en zuiver knippen van de staaldraden.

KABELLADDERS



Kabelladders

| Typenummer | Afm. mm B x H | Art. nummer | |  kg /m |  VPE | Korting groep |
|------------|---------------------|----------------|--|--|---|------------------|
|------------|---------------------|----------------|--|--|---|------------------|

Kabelladder vertikaal sportafstand 300 mm **lengte 3 mtr**

| | | | | | | |
|----------|--------------|----------|--------|------|-----|----|
| S | STL 60.203/3 | 200 x 60 | 149012 | 2,68 | 3 m | HN |
| | STL 60.303/3 | 300 x 60 | 149013 | 2,93 | 3 m | HN |
| | STL 60.403/3 | 400 x 60 | 149014 | 3,18 | 3 m | HN |
| | STL 60.503/3 | 500 x 60 | 149015 | 3,43 | 3 m | HN |
| | STL 60.603/3 | 600 x 60 | 149016 | 3,68 | 3 m | HN |

Kabelladder vertikaal sportafstand 300 mm **lengte 3 mtr**

| | | | | | | |
|----------|---------------|-----------|--------|------|-----|----|
| S | STL 100.203/3 | 200 x 100 | 199381 | 3,51 | 3 m | HN |
| | STL 100.303/3 | 300 x 100 | 199382 | 3,71 | 3 m | HN |
| | STL 100.403/3 | 400 x 100 | 199383 | 3,90 | 3 m | HN |
| | STL 100.503/3 | 500 x 100 | 199390 | 4,10 | 3 m | HN |
| | STL 100.603/3 | 600 x 100 | 199391 | 4,30 | 3 m | HN |

Kabelladder horizontaal sportafstand 300 mm **lengte 6 mtr**

| | | | | | | |
|----------|--------------|-----------|--------|------|-----|----|
| S | KL 100.203/3 | 200 x 100 | 142132 | 3,51 | 6 m | HN |
| | KL 100.303/3 | 300 x 100 | 142133 | 3,71 | 6 m | HN |
| | KL 100.403/3 | 400 x 100 | 142134 | 3,90 | 6 m | HN |
| | KL 100.503/3 | 500 x 100 | 142135 | 4,10 | 6 m | HN |
| | KL 100.603/3 | 600 x 100 | 142136 | 4,30 | 6 m | HN |

Scheidingsschot incl. 4 x FLM 6x12 **lengte 3 mtr**

| | | | | | | |
|----------|-------|---------|--------|------|-----|----|
| S | RW 35 | 24 x 30 | 161246 | 0,35 | 3 m | HN |
| | RW 85 | 24 x 80 | 161248 | 0,85 | 3 m | HN |

Scheidingsschot houder

| | | | | | | |
|----------|---------|---------|--------|--------------|----|----|
| S | KLWC 16 | 34 X 24 | 142386 | tbv STL 0,02 | St | HN |
| | KLWC 11 | 36 X 24 | 142385 | tbv KL 0,02 | St | HN |

Kabelladder koppeling incl. 2 x FLM 8x13F

| | | | | | | |
|----------|---------|-----------|--------|------|----|----|
| S | KSV 60 | 150 x 60 | 142352 | 3,51 | St | HN |
| | KSV 100 | 150 x 100 | 142353 | 3,51 | St | HN |

Kabelladder koppeling horizontaal instelbaar **incl. 4 x FLM 8x13F**

| | | | | | | |
|----------|---------|-----------|--------|------|----|----|
| S | KWV 60 | 320 x 60 | 142358 | 0,35 | St | HN |
| | KWV 100 | 320 x 100 | 142359 | 0,55 | St | HN |

Kabelladder koppeling vertikaal instelbaar **incl. 2 x FLM 8x13F**

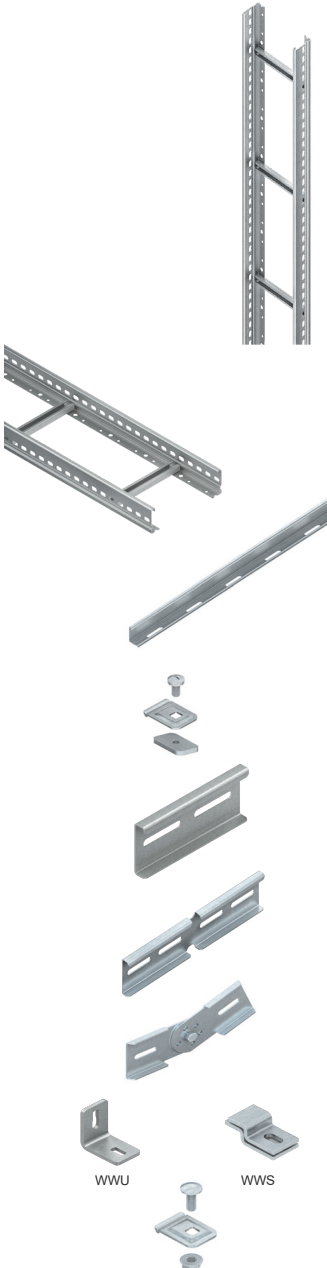
| | | | | | | |
|----------|---------|-----------|--------|------|----|----|
| S | KGV 60 | 180 x 60 | 142355 | 0,34 | St | HN |
| | KGV 100 | 288 x 100 | 142356 | 0,54 | St | HN |

Wandbeugel

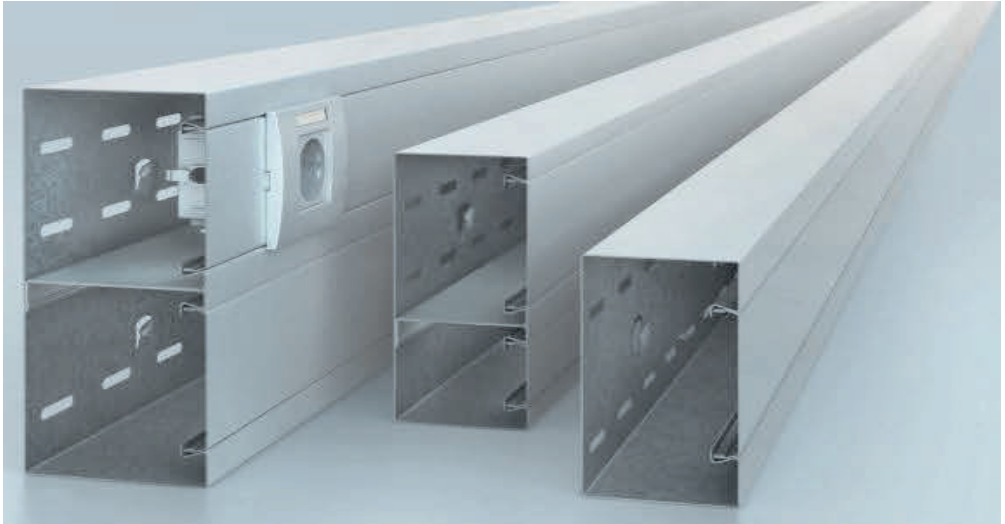
| | | | | | | |
|----------|-----------|---------|--------|------|----|----|
| S | WWU 150/8 | 60 x 40 | 150583 | 0,20 | St | HN |
| | WWS 10 | 16 x 40 | 149380 | 0,27 | St | HN |

Profielklem incl. 1 x FLM 6x12

| | | | | | | |
|----------|--------|---------|--------|------|----|----|
| S | KLTB 6 | 24 x 33 | 142380 | 0,02 | St | HN |
|----------|--------|---------|--------|------|----|----|



WANDKANALEN

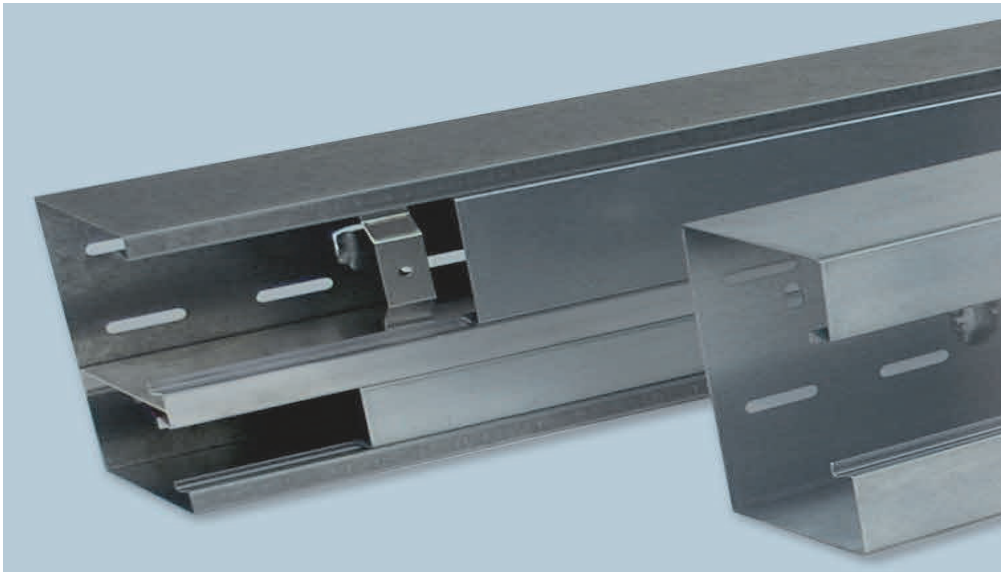


De NIEDAX GKU wandkanalen zijn leverbaar 70 mm diep en 90 mm diep.



| C -COLOR | STANDAARD KLEUREN | | | ALUMINIUM OPPERVLAKTE | |
|--|-------------------------|------------------------|-----------------------|---------------------------------|--------------------------|
| | VW | L | WA | N | P |
| *Nummer toevoeging aan type-nummer mbt RAL-kleur | Verkeerswit RAL 9016 | Lichtgrijs RAL 7035 | Blank alu RAL 9006 | Aluminium blank geanodiseerd | Aluminium onbehandeld |

Andere RAL-kleuren op aanvraag!

Wij zijn niet aansprakelijk voor eventuele kleurafwijkingen!



Wandkanalen

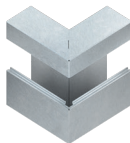
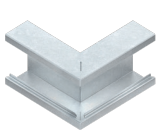
| Typenummer | Afm. mm H x T | Art. nummer |  kg m |  VPE | Korting groep |
|------------|---------------------|----------------|---|---|------------------|
|------------|---------------------|----------------|---|---|------------------|



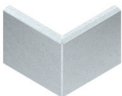
GKF78



GPK63



GKA 170A


Wandkanaal inclusief 3 x GKF 78 per lengte

lengte 2 mtr

| VW | GKU 110-78T70VW | 110 x 70 | 133011 | 2,05 | 2 m | LN |
|-----------|------------------|----------|--------|------|-----|----|
| | GKU 133-78T70VW | 133 x 70 | 133021 | 2,35 | 2 m | LN |
| | GKU 170-78T70VW | 170 x 70 | 133031 | 2,87 | 2 m | LN |
| | GKU 170A-78T70VW | 170 x 70 | 133041 | 2,87 | 2 m | LN |
| | GKU 220-78T70VW | 220 x 70 | 133051 | 3,83 | 2 m | LN |

Deksel wandkanaal inclusief 2 x aardklem GPK63 per lengte

| VW | GDS 78VW | 78 | 133711 | 0,76 | 2 m | LN |
|-----------|-------------|----|--------|------|--------|----|
| | GDS 78/50VW | 78 | 132701 | 0,05 | 0,05 m | LN |

Scheidingsshot wandkanaal

lengte 2 mtr

| S | TPS 60S | 60 x 78 | 131935 | 0,52 | 2 m | LN |
|----------|---------|---------|--------|------|-----|----|

Koppeling wandkanaal met aardlip

| S | GSPA 70S | 80 | 133900 | 0,02 | | LN |
|----------|----------|----|--------|------|--|----|

Binnenhoek 90°

| VW | GKIE110T70VW | 110 x 70 | 133211 | 0,23 | St | LN |
|-----------|--------------|----------|--------|------|----|----|
| | GKIE133T70VW | 133 x 70 | 133221 | 0,25 | St | LN |
| | GKIE170T70VW | 170 x 70 | 133231 | 0,27 | St | LN |
| | GKIE220T70VW | 220 x 70 | 133281 | 0,31 | St | LN |

Buitenhoek 90°

| VW | GKA 110T70VW | 110 x 70 | 133111 | 0,71 | St | LN |
|-----------|---------------|----------|--------|------|----|----|
| | GKA 133T70VW | 133 x 70 | 133121 | 0,82 | St | LN |
| | GKA 170T70VW | 170 x 70 | 133131 | 1,01 | St | LN |
| | GKA 170AT70VW | 170 x 70 | 133141 | 1,01 | St | LN |
| | GKA 220T70VW | 220 x 70 | 133171 | 1,35 | St | LN |

Deksel buitenhoek 90°

| VW | GKE 78/100VW | 78 x 100 | 133751 | 0,71 | St | LN |
|-----------|--------------|----------|--------|------|----|----|

Wandkanalen

| Typenummer | Afm. mm H x T | Art. nummer | kg m | VPE | Korting groep |
|------------|---------------------|----------------|---------|-----|------------------|
|------------|---------------------|----------------|---------|-----|------------------|



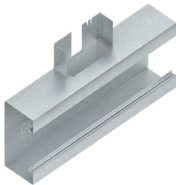
Verticalehoek 90°

| | | | | | | |
|----|--------------------------------|----------|--------|------|----|----|
| vw | GKV 110T70VW | 110 x 70 | 133311 | 1,13 | St | LN |
| | GKV 133T70VW | 133 x 70 | 133321 | 1,34 | St | LN |
| | GKV 170T70VW | 170 x 70 | 133331 | 1,73 | St | LN |
| | GKVO 170AT70VW ^{OP} | 170 x 70 | 133341 | 1,73 | St | LN |
| | GKVU 170AT70VW ^{NEER} | 170 x 70 | 133346 | 1,73 | St | LN |
| | GKV 220T70VW | 220 x 70 | 133351 | 2,50 | St | LN |



Deksel verticalehoek 90°

| | | | | | | |
|----|---------------|----------|--------|------|----|----|
| vw | GKVD 78/100VW | 78 x 100 | 133761 | 0,71 | St | LN |
|----|---------------|----------|--------|------|----|----|



T-stuk 90°

| | | | | | | |
|----|--------------|----------|--------|------|----|----|
| vw | GKT 110T70VW | 110 x 70 | 133411 | 0,90 | St | LN |
| | GKT 133T70VW | 133 x 70 | 133421 | 1,04 | St | LN |
| | GKT 170T70VW | 170 x 70 | 133431 | 1,25 | St | LN |
| | GKT 220T70VW | 220 x 70 | 133451 | 1,67 | St | LN |



Eindplaat

| | | | | | | |
|----|---------------|----------|--------|------|----|----|
| vw | GADU 110T70VW | 110 x 70 | 133801 | 0,13 | St | LN |
| | GADU 133T70VW | 133 x 70 | 133811 | 0,15 | St | LN |
| | GADU 170T70VW | 170 x 70 | 133821 | 0,18 | St | LN |
| | GADU 220T70VW | 220 x 70 | 133831 | 0,22 | St | LN |



Afdekstrip



| | | | | | | |
|----|---------------|----------|--------|------|----|----|
| vw | GSAG 110T70VW | 110 x 70 | 133611 | 0,07 | St | LN |
| | GSAG 133T70VW | 133 x 70 | 133621 | 0,09 | St | LN |
| | GSAG 170T70VW | 170 x 70 | 133631 | 0,13 | St | LN |
| | GSAG 220T70VW | 220 x 70 | 133651 | 0,19 | St | LN |



Rozet

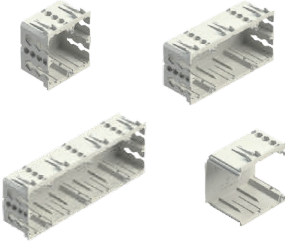
| | | | | | | |
|----|--------------|----------|--------|------|----|----|
| vw | GWB 110T70VW | 110 x 70 | 133511 | 0,08 | St | LN |
| | GWB 133T70VW | 133 x 70 | 133521 | 0,09 | St | LN |
| | GWB 170T70VW | 170 x 70 | 133531 | 0,10 | St | LN |
| | GWB 220T70VW | 220 x 70 | 133551 | 0,11 | St | LN |

Wandkanalen

| Typenummer | | Art. nummer |  st |  VPE | Korting groep |
|------------|--|-------------|--|---|---------------|
|------------|--|-------------|--|---|---------------|


Dekselopener

| | | | | | | |
|----------|-------|--|--------|------|----|----|
| K | DH 55 | | 131996 | 0,02 | St | LN |
|----------|-------|--|--------|------|----|----|


Montagedoos

| | | | | | | |
|----------|-------------|------------|--------|------|----|----|
| K | GDM 50-1 VW | 1-voudig | 129660 | 0,05 | St | LN |
| | GDM 50-2 VW | 2-voudig | 129662 | 0,09 | St | LN |
| | GDM 50-3 VW | 3-voudig | 129664 | 0,13 | St | LN |
| | GDM M 50 VW | tussenstuk | 129670 | 0,04 | St | LN |


Montageraam data

| | | | | | | |
|----------|---------|--|--------|------|----|----|
| K | GDTR 15 | | 129630 | 0,03 | St | LN |
|----------|---------|--|--------|------|----|----|

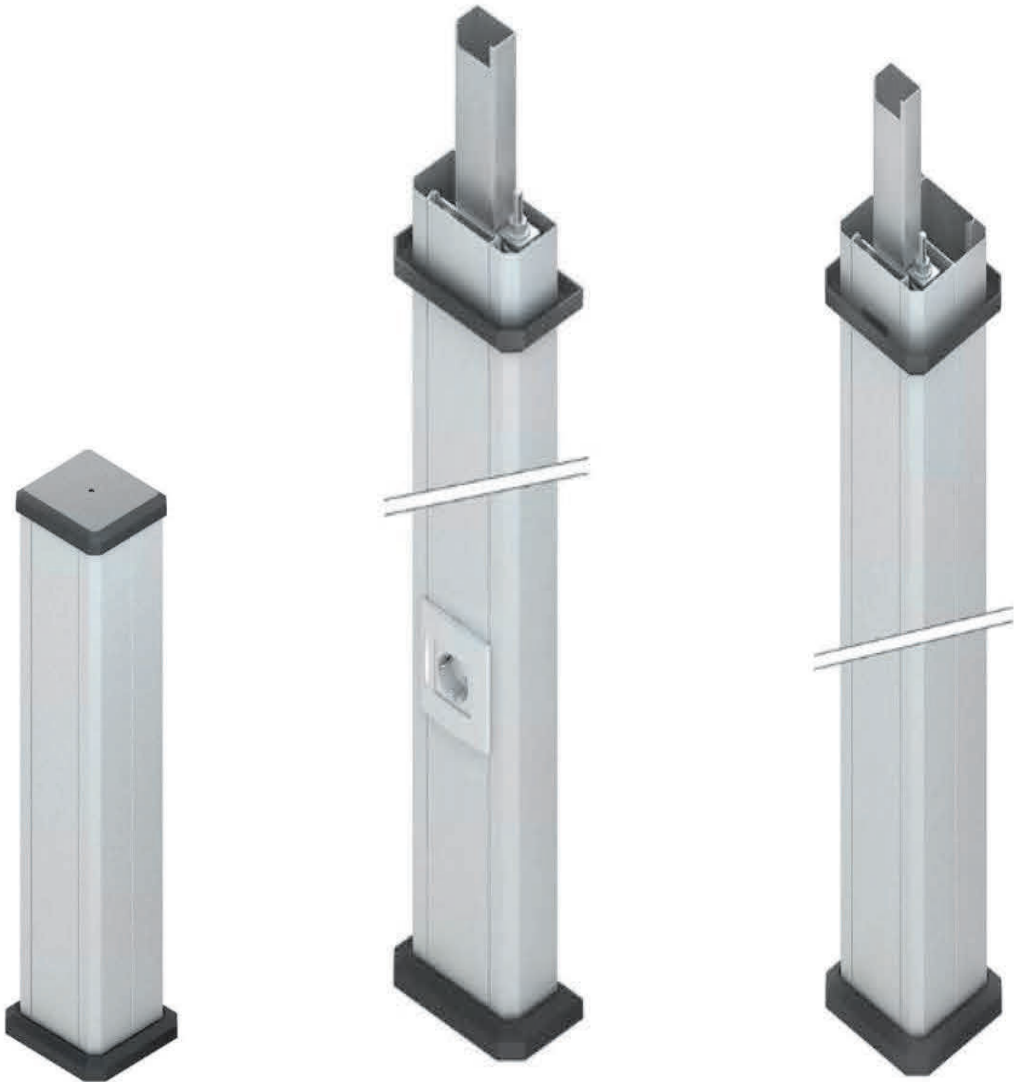

Lasdoos

| | | | | | | |
|----------|-----------|-------|--------|------|----|----|
| K | GDV 70/45 | groen | 129603 | 0,05 | St | LN |
|----------|-----------|-------|--------|------|----|----|


Adapterprofiel t.b.v. montage lasdoos

| | | | | | | |
|----------|----------|--|--------|------|----|----|
| G | TS 35T60 | | 131911 | 0,20 | St | LN |
|----------|----------|--|--------|------|----|----|

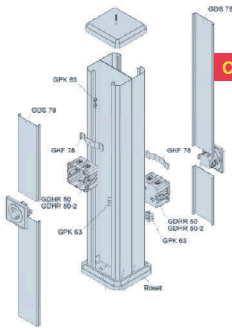
Energiezuilen (staal)



| | STANDAARD KLEUREN | | | ALUMINIUM OPPERVLAKTE | |
|--|-------------------------|------------------------|-----------------------|---------------------------------|--------------------------|
| C - COLOR | VW | L | WA | N | P |
| *Nummer toevoeging aan type-nummer mbt RAL-kleur | Verkeerswit RAL 9016 | Lichtgrijs RAL 7035 | Blank alu RAL 9006 | Aluminium blank geanodiseerd | Aluminium onbehandeld |

Andere RAL-kleuren op aanvraag!

Wij zijn niet aansprakelijk voor eventuele kleurafwijkingen!



COLOR

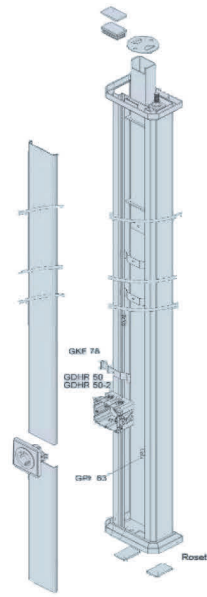
Opvoerzuil, gecoat met dekselopening 2 x 78 mm.

| | Hoogte | Art.nr | Gewicht | VPE |
|------------------------|--------|--------|---------|------|
| C ESDB 133/720* | 720 | 131051 | 5,50 | 1Set |

De energiezuil wordt als set geleverd.

De set bestaat uit:

- + 1 tweezijdige zuil met bevestigingsplaten
- + 2 stalen deksels, GDS78, lengte: 705 mm
- + 1 afdekkap van zwart kunststof, moeilijk ontvlambaar
- + 1 rozet van zwart kunststof, moeilijk ontvlambaar
- + 2 kabelhouderklemmen, GKF78
- + 4 potentiaalvereffeningsklemmen, GPK63



COLOR

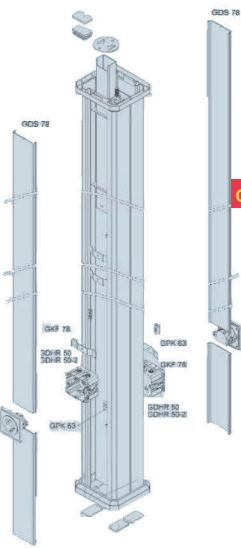
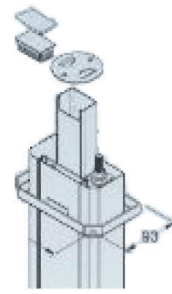
Doorlopende zuil, enkel, gecoat dekselopening 1x78 mm voor plafondhoogte 2.770 tot 3.070 mm

| | | | | |
|-------------------------|-------|--------|-------|------|
| C ESED 133/2750* | 2.750 | 131001 | 11,00 | 1Set |
|-------------------------|-------|--------|-------|------|

De energiezuil wordt als set geleverd. ZICHTWERKHOOGTE- 2450 mm i.v.m. plafondhoogte verstelling.

De set bestaat uit:

- + 1 enkelzijdige zuil met vloerbevestigingsplaten
- + 1 stalen deksel, GDS78, lengte: 2.750 mm
- + 1 plafondbevestigingsplaat (met schroefbevestiging)
- + 2 rozetten van zwart kunststof, moeilijk ontvlambaar
- + 3 kabelhouderklemmen, GKF78
- + 2 potentiaalvereffeningsklemmen, GPK63
- + 1 kunststof kap (voor klembevestiging)
- + 5 beschermrubbers



COLOR

Doorlopende zuil, dubbel, gecoat dekselopening 2x78 mm voor plafondhoogte 2.770 tot 3.070 mm

| | | | | |
|-------------------------|-------|--------|-------|------|
| C ESDD 133/2750* | 2.750 | 131011 | 20,00 | 1Set |
|-------------------------|-------|--------|-------|------|

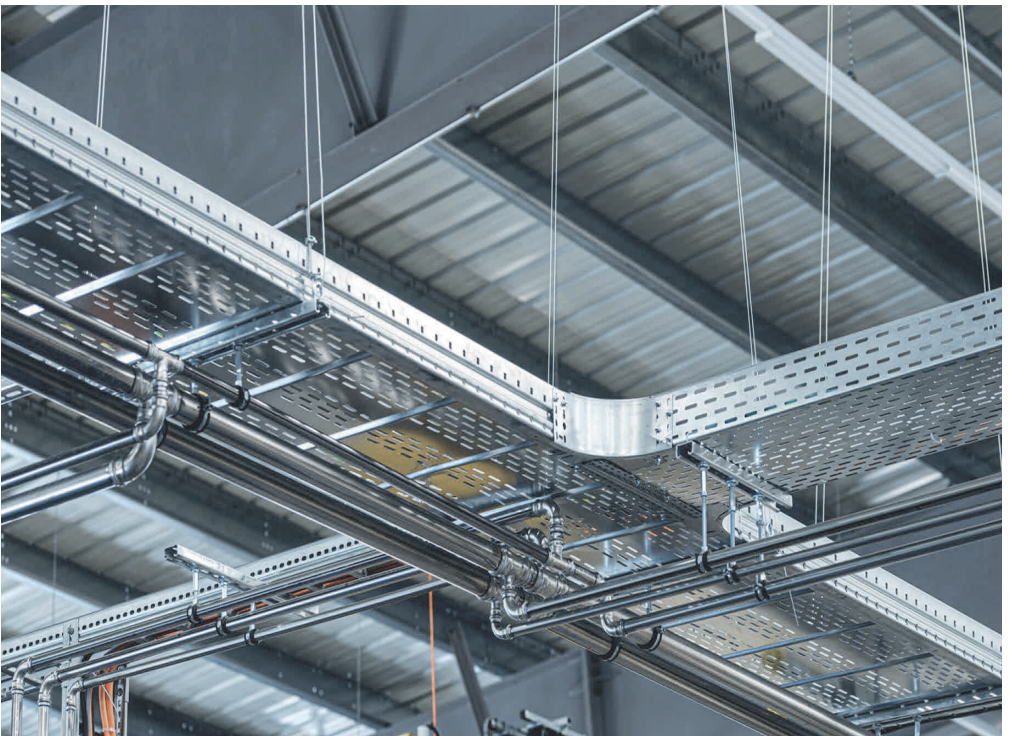
De energiezuil wordt als set geleverd.

De set bestaat uit:

- + 1 tweezijdige zuil met vloerbevestigingsplaten
- + 2 stalen deksels, GDS78, lengte: 2.750 mm
- + 1 plafondbevestigingsplaat (met schroefbevestiging)
- + 2 rozetten van zwart kunststof, moeilijk ontvlambaar
- + 6 kabelhouderklemmen, GKF78
- + 4 potentiaalvereffeningsklemmen, GPK63
- + 1 kunststof kap (voor klembevestiging)
- + 5 beschermrubbers

Energiezuilen voor andere plafondhoogtes op aanvraag!

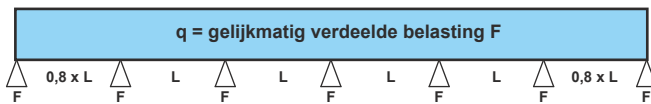
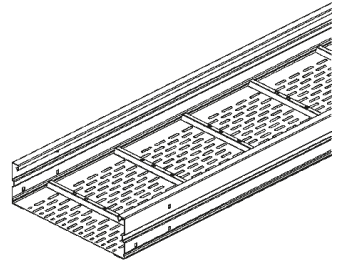
Overspanningsgoten en -ladders



Goede beheersing van de constructiebelasting

Grote overspanningen brengen onvermijdelijk hoge constructiebelastingen teweeg. Het inplannen van constructies in nieuwbouw- of renovatiewerken dient met de adviseur afgestemd te worden.

NIEDAX maakt met haar standaard materiaal, bijvoorbeeld zeer zware consoles, koppelplaten, U-profielen, pendels, enz. de productie van industriële draagconstructies mogelijk. Met eenvoudige middelen kan men speciale constructies fabriceren.



| Befestigungsabst. L m | WRL 105... | | WRL 150... | | WRLM 150... | | WRL 200... | |
|-----------------------|------------|------|------------|-------|-------------|-------|------------|-------|
| | q kN/m | F kN | q kN/m | F kN | q kN/m | F kN | q kN/m | F kN |
| 3 | 3,00 | 9,30 | 3,15 | 9,80 | 3,45 | 10,75 | 3,45 | 10,75 |
| 4 | 1,70 | 7,20 | 2,40 | 10,05 | 2,90 | 12,15 | 2,80 | 11,70 |
| 5 | 1,10 | 6,00 | 1,75 | 9,30 | 2,35 | 12,40 | 2,15 | 11,40 |
| 6 | 0,75 | 5,10 | 1,20 | 7,85 | 1,85 | 11,90 | 1,55 | 10,05 |
| 7 | 0,55 | 4,55 | 0,85 | 6,75 | 1,35 | 10,40 | 1,10 | 8,60 |
| 8 | 0,40 | 4,00 | 0,60 | 5,70 | 1,00 | 9,05 | 0,85 | 7,80 |
| 9 | 0,31 | 3,70 | 0,43 | 4,85 | 0,77 | 8,10 | 0,67 | 7,15 |
| 10 | - | - | - | - | - | - | - | - |
| 11 | - | - | - | - | - | - | - | - |
| 12 | - | - | - | - | - | - | - | - |

Bij overspanningskabelgoten dient men met het volgende rekening te houden:

q = maximaal toegestane belastbaarheid [kg/m] **1 kg ~ 10 N**

$F = (q + \text{eigen gewicht}) \times L$

De belastbaarheid plus het eigen gewicht (per meter) en de afstand van de ophangingen resulteert in de constructiebelasting [N].

Vormstukken en hoekverbindingen

Deze moeten bij de koppelplaten direct ondersteund worden!

Deksel

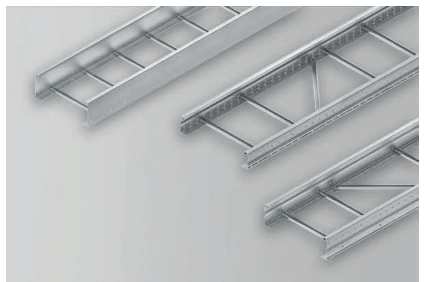
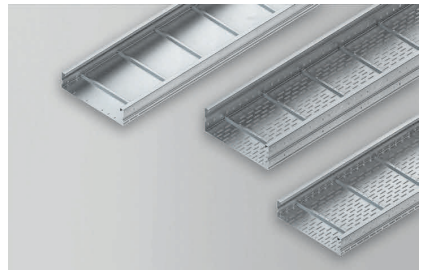
De toegestane belastbaarheid neemt af al naar gelang er gebuik gemaakt wordt van deksels met het eigen gewicht van de deksels.

Begaanbaarheid

Op de kabelgoten mag niet gelopen worden en ze mogen niet zijdelings belast worden door bijvoorbeeld gemonteerde leidingen.

Kabeldraagvermogen

De maximaal toegestane belastbaarheid (q), gereduceerd met het gewicht van een eventuele deksel, gedeeld door het eigen gewicht van de gebruikte kabel.



Overspanningsgoten en -ladders

De 400,500 en 600 mm brede WRL/WRU worden geleverd incl. bodemkoppeling

Kortinggroep - HN

| | | | | | |
|-----------------------------|------------------------|---------------------------|---|--|---|
| NIEDAX Typenummer | Afmetingen mm H x B | Artikel Nummer |  SKM FLM 10x20 8x13 |  kg P/Stuk |  VPE |
|-----------------------------|------------------------|---------------------------|---|--|---|



Kabelgoot

| | | | | | | |
|----------|-------------|-----------|--------|--|------|-----|
| S | WRL 105.200 | 105 x 200 | 126002 | | 6,24 | 6 m |
| | WRL 105.300 | 105 x 300 | 126003 | | 6,84 | 6 m |
| | WRL 105.400 | 105 x 400 | 126004 | | 7,50 | 6 m |
| | WRL 105.500 | 105 x 500 | 126005 | | 8,12 | 6 m |
| | WRL 105.600 | 105 x 600 | 126006 | | 9,31 | 6 m |



Kabelgoot

| | | | | | | |
|----------|---------------|-----------|--------|--|-------|-----|
| F | WRL 105.200 F | 105 x 200 | 126102 | | 6,87 | 6 m |
| | WRL 105.300 F | 105 x 300 | 126103 | | 7,53 | 6 m |
| | WRL 105.400 F | 105 x 400 | 126104 | | 8,26 | 6 m |
| | WRL 105.500 F | 105 x 500 | 126105 | | 8,94 | 6 m |
| | WRL 105.600 F | 105 x 600 | 126106 | | 10,24 | 6 m |

Kabelgoot

| | | | | | | |
|----------|-------------|-----------|--------|--|-------|-----|
| S | WRU 105.200 | 105 x 200 | 126302 | | 6,50 | 6 m |
| | WRU 105.300 | 105 x 300 | 126303 | | 7,25 | 6 m |
| | WRU 105.400 | 105 x 400 | 126304 | | 8,05 | 6 m |
| | WRU 105.500 | 105 x 500 | 126305 | | 8,81 | 6 m |
| | WRU 105.600 | 105 x 600 | 126306 | | 10,06 | 6 m |

Kabelgoot

| | | | | | | |
|----------|---------------|-----------|--------|--|-------|-----|
| F | WRU 105.200 F | 105 x 200 | 126402 | | 7,16 | 6 m |
| | WRU 105.300 F | 105 x 300 | 126403 | | 7,98 | 6 m |
| | WRU 105.400 F | 105 x 400 | 126404 | | 8,86 | 6 m |
| | WRU 105.500 F | 105 x 500 | 126405 | | 9,70 | 6 m |
| | WRU 105.600 F | 105 x 600 | 126406 | | 11,08 | 6 m |



Koppeling

| | | | | | | |
|----------|-------------|--|--------|---|------|--------|
| S | WSV 105.390 | | 125700 | 4 | 1,16 | 10 St. |
|----------|-------------|--|--------|---|------|--------|

Koppeling

| | | | | | | |
|----------|---------------|--|--------|---|------|--------|
| F | WSV 105.390 F | | 125720 | 4 | 1,27 | 10 St. |
|----------|---------------|--|--------|---|------|--------|



Koppeling verticaal instelbaar

| | | | | | | |
|----------|----------|--|--------|-----|------|------|
| S | WSGV 105 | | 125707 | 1 6 | 0,92 | Stuk |
|----------|----------|--|--------|-----|------|------|

Koppeling verticaal instelbaar

| | | | | | | |
|----------|------------|--|--------|-----|------|------|
| F | WSGV 105 F | | 125727 | 1 6 | 1,00 | Stuk |
|----------|------------|--|--------|-----|------|------|



Koppeling horizontaal instelbaar

| | | | | | | |
|----------|--------------|--|--------|---|------|--------|
| S | WSWV 105.390 | | 125704 | 6 | 0,92 | 10 St. |
|----------|--------------|--|--------|---|------|--------|

Koppeling horizontaal instelbaar

| | | | | | | |
|----------|----------------|--|--------|---|------|--------|
| F | WSWV 105.390 F | | 125724 | 6 | 1,01 | 10 St. |
|----------|----------------|--|--------|---|------|--------|



Aanzethoekstuk

| | | | | | | |
|----------|----------|-----|--------|---|------|------|
| S | WAER 105 | 105 | 125711 | 6 | 4,13 | Stuk |
|----------|----------|-----|--------|---|------|------|

Aanzethoekstuk

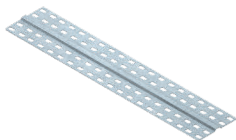
| | | | | | | |
|----------|------------|-----|--------|---|------|------|
| F | WAER 105 F | 105 | 125741 | 6 | 4,53 | Stuk |
|----------|------------|-----|--------|---|------|------|

Kortinggroep - HN

| NIEDAX Typenummer | Afmetingen mm H x B | Artikel Nummer |  FLM 6x12 |  kg P/Stuk |  VPE |
|----------------------|------------------------|-------------------|---|--|--|
|----------------------|------------------------|-------------------|---|--|--|

Koppelplaat, indien extra nodig

| | | | | | | |
|---|---------|-----|--------|---|------|------|
| S | RSL 400 | 400 | 305445 | 4 | 0,27 | Stuk |
| | RSL 500 | 500 | 305469 | 4 | 0,34 | Stuk |
| | RSL 600 | 600 | 305483 | 4 | 0,41 | Stuk |



Koppelplaat, indien extra nodig

| | | | | | | |
|---|-----------|-----|--------|---|------|------|
| F | RSL 400 F | 400 | 593149 | 4 | 0,27 | Stuk |
| | RSL 500 F | 500 | 593163 | 4 | 0,34 | Stuk |
| | RSL 600 F | 600 | 593187 | 4 | 0,41 | Stuk |

Bocht 90 °

| | | | | | | |
|---|--------------|-----------|--------|--|-------|------|
| S | WRBR 105.200 | 105 x 200 | 127002 | | 9,61 | Stuk |
| | WRBR 105.300 | 105 x 300 | 127003 | | 11,39 | Stuk |
| | WRBR 105.400 | 105 x 400 | 127004 | | 13,31 | Stuk |
| | WRBR 105.500 | 105 x 500 | 127005 | | 15,34 | Stuk |
| | WRBR 105.600 | 105 x 600 | 127006 | | 17,50 | Stuk |



Bocht 90 °

| | | | | | | |
|---|----------------|-----------|--------|--|-------|------|
| F | WRBR 105.200 F | 105 x 200 | 127202 | | 10,57 | Stuk |
| | WRBR 105.300 F | 105 x 300 | 127203 | | 12,54 | Stuk |
| | WRBR 105.400 F | 105 x 400 | 127204 | | 14,64 | Stuk |
| | WRBR 105.500 F | 105 x 500 | 127205 | | 16,88 | Stuk |
| | WRBR 105.600 F | 105 x 600 | 127206 | | 19,25 | Stuk |

T - stuk

| | | | | | | |
|---|--------------|-----------|--------|--|-------|------|
| S | WRTR 105.200 | 105 x 200 | 127042 | | 15,97 | Stuk |
| | WRTR 105.300 | 105 x 300 | 127043 | | 18,39 | Stuk |
| | WRTR 105.400 | 105 x 400 | 127044 | | 21,04 | Stuk |
| | WRTR 105.500 | 105 x 500 | 127045 | | 23,76 | Stuk |
| | WRTR 105.600 | 105 x 600 | 127046 | | 27,81 | Stuk |



T - stuk

| | | | | | | |
|---|----------------|-----------|--------|--|-------|------|
| F | WRTR 105.200 F | 105 x 200 | 127242 | | 17,57 | Stuk |
| | WRTR 105.300 F | 105 x 300 | 127243 | | 20,23 | Stuk |
| | WRTR 105.400 F | 105 x 400 | 127244 | | 23,14 | Stuk |
| | WRTR 105.500 F | 105 x 500 | 127245 | | 26,14 | Stuk |
| | WRTR 105.600 F | 105 x 600 | 127246 | | 30,59 | Stuk |

Aanzet T - stuk

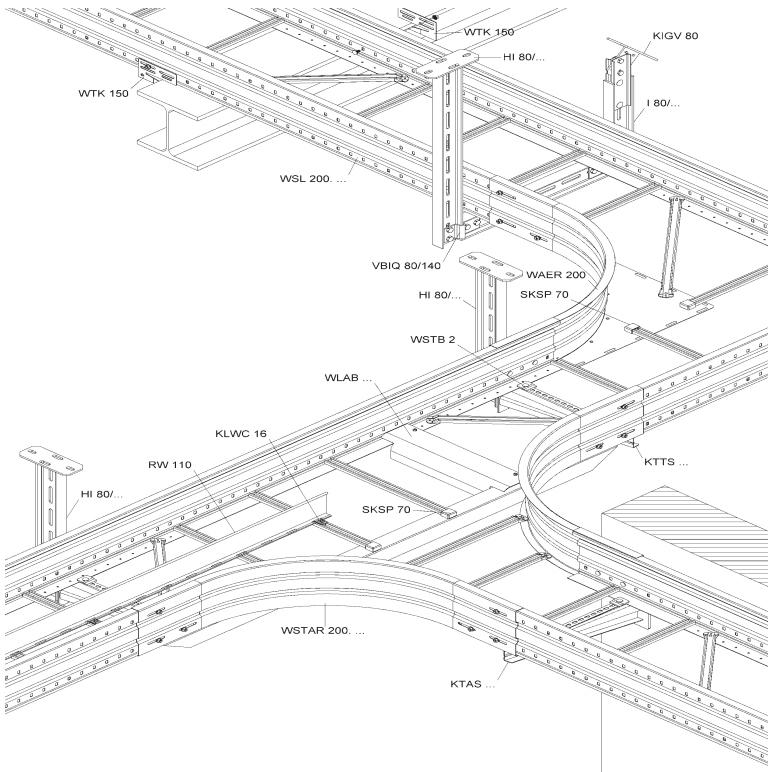
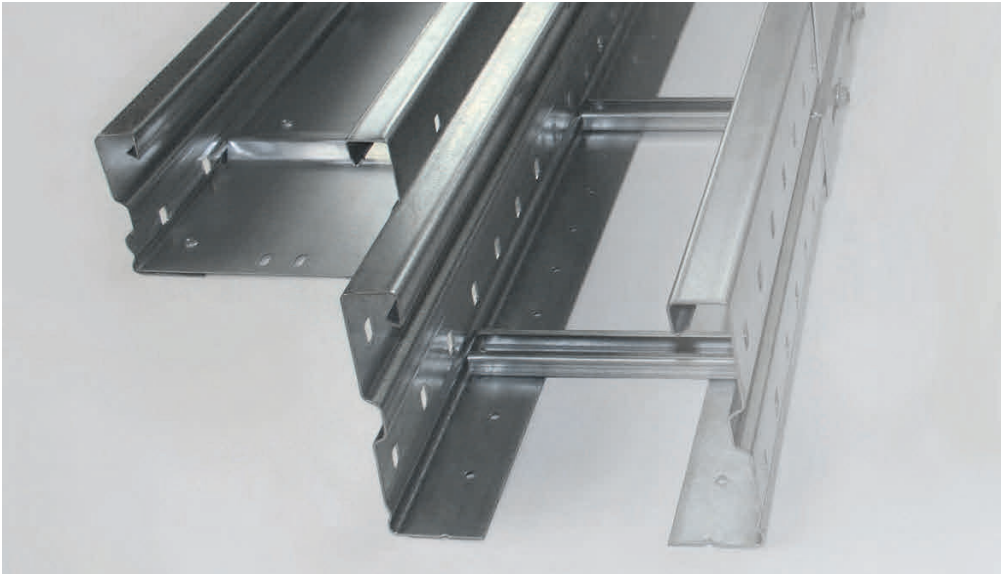
| | | | | | | |
|---|---------------|-------------|--------|--|-------|------|
| S | WRTAR 105.200 | 106,5 x 205 | 127112 | | 11,44 | Stuk |
| | WRTAR 105.300 | 106,5 x 305 | 127113 | | 12,13 | Stuk |
| | WRTAR 105.400 | 106,5 x 405 | 127114 | | 12,81 | Stuk |
| | WRTAR 105.500 | 106,5 x 505 | 127115 | | 13,50 | Stuk |
| | WRTAR 105.600 | 106,5 x 605 | 127116 | | 14,19 | Stuk |



Aanzet T - stuk

| | | | | | | |
|---|-----------------|-------------|--------|--|-------|------|
| F | WRTAR 105.200 F | 106,5 x 205 | 127312 | | 12,56 | Stuk |
| | WRTAR 105.300 F | 106,5 x 305 | 127313 | | 13,32 | Stuk |
| | WRTAR 105.400 F | 106,5 x 405 | 127314 | | 14,07 | Stuk |
| | WRTAR 105.500 F | 106,5 x 505 | 127315 | | 14,83 | Stuk |
| | WRTAR 105.600 F | 106,5 x 605 | 127316 | | 15,58 | Stuk |

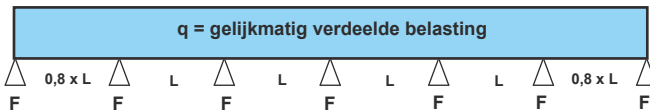
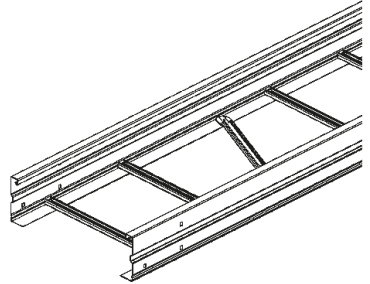
Overspanningsgoten en -ladders



Goede beheersing van de constructiebelasting

Grote overspanningen brengen onvermijdelijk hoge constructiebelastingen teweeg. Het inplannen van constructies in nieuwbouw- of renovatiewerken dient met de adviseur afgestemd te worden.

NIEDAX maakt met haar standaard materiaal, bijvoorbeeld zeer zware consoles, koppelplaten, U-profielen, pendels, enz. de productie van industriële draagconstructies mogelijk. Met eenvoudige middelen kan men speciale constructies fabriceren.



| Ondersteunings afstand | WSL 105... | | WSL 150... | | WSL 200... | | WSLS 200... | |
|---------------------------|------------|----------|------------|----------|------------|----------|-------------|----------|
| | L [m] | q [kg/m] | F [N] | q [kg/m] | F [N] | q [kg/m] | F [N] | q [kg/m] |
| 3 | 295 | 9210 | 315 | 9855 | 345 | 10845 | | |
| 4 | 135 | 5880 | 195 | 8340 | 225 | 9660 | | |
| 5 | 80 | 4600 | 115 | 6425 | 150 | 8325 | 425 | 22225 |
| 6 | 45 | 3420 | 70 | 5100 | 95 | 6690 | 310 | 19770 |
| 7 | 30 | 2940 | 50 | 4445 | 70 | 6055 | 205 | 15715 |
| 8 | | | 30 | 3480 | 45 | 4920 | 130 | 11960 |
| 9 | | | | | | | 95 | 10305 |
| 10 | | | | | | | 65 | 8450 |
| 11 | | | | | | | 40 | 6545 |
| 12 | | | | | | | 30 | 5940 |

Bij overspanningskabeladders dient men met het volgende rekening te houden:

q = maximaal toegestane balastbaarheid [kg/m] **1 kg ~ 10 N**

$F = (q + \text{eigen gewicht}) \times L$

De balastbaarheid plus het eigen gewicht (per meter) en de afstand van de ophangingen resulteert in de constructiebelasting [N].

Vormstukken en hoekverbindingen

Deze moeten bij de koppelplaten direct ondersteund worden!

Deksel

De toegestane balastbaarheid neemt af al naar gelang er gebruik gemaakt wordt van deksels met het eigen gewicht van de deksels.

Begaanbaarheid

Op de kabeladders mag niet gelopen worden en ze mogen niet zijdelings belast worden door bijvoorbeeld gemonteerde leidingen.

Kabeldraagvermogen

De maximaal toegestane balastbaarheid (q), gereduceerd met het gewicht van een eventuele deksel, gedeeld door het eigen gewicht van de gebruikte kabel.

| | | | | | |
|----------------------|------------------------|-------------------|-----------------------|--------------|-----|
| NIEDAX Typenummer | Afmetingen mm H x B | Artikel Nummer | SKM FLM 10x20 8x13 | kg P/Stuk | VPE |
|----------------------|------------------------|-------------------|-----------------------|--------------|-----|



Kabelladder

lengte 6 m

| | | | | | | |
|----------|-------------|-----------|--------|--|------|-----|
| S | WSL 105.200 | 105 x 200 | 124002 | | 5,46 | 6 m |
| | WSL 105.300 | 105 x 300 | 124003 | | 5,73 | 6 m |
| | WSL 105.400 | 105 x 400 | 124004 | | 6,01 | 6 m |
| | WSL 105.500 | 105 x 500 | 124005 | | 6,26 | 6 m |
| | WSL 105.600 | 105 x 600 | 124006 | | 6,53 | 6 m |

Kabelladder

lengte 6 m

| | | | | | | |
|----------|---------------|-----------|--------|--|------|-----|
| F | WSL 105.200 F | 105 x 200 | 124102 | | 6,01 | 6 m |
| | WSL 105.300 F | 105 x 300 | 124103 | | 6,31 | 6 m |
| | WSL 105.400 F | 105 x 400 | 124104 | | 6,61 | 6 m |
| | WSL 105.500 F | 105 x 500 | 124105 | | 6,89 | 6 m |
| | WSL 105.600 F | 105 x 600 | 124106 | | 7,19 | 6 m |



Koppeling

| | | | | | | |
|----------|-------------|--|--------|---|------|--------|
| S | WSV 105.390 | | 125700 | 4 | 1,16 | 10 St. |
|----------|-------------|--|--------|---|------|--------|

Koppeling

| | | | | | | |
|----------|---------------|--|--------|---|------|--------|
| F | WSV 105.390 F | | 125720 | 4 | 1,27 | 10 St. |
|----------|---------------|--|--------|---|------|--------|



Koppeling verticaal instelbaar

| | | | | | | |
|----------|----------|--|--------|----|------|------|
| S | WSGV 105 | | 125707 | 16 | 0,92 | Stuk |
|----------|----------|--|--------|----|------|------|

Koppeling verticaal instelbaar

| | | | | | | |
|----------|------------|--|--------|----|------|------|
| F | WSGV 105 F | | 125727 | 16 | 1,00 | Stuk |
|----------|------------|--|--------|----|------|------|



Koppeling horizontaal instelbaar

| | | | | | | |
|----------|--------------|--|--------|---|------|--------|
| S | WSWV 105.390 | | 125704 | 6 | 0,92 | 10 St. |
|----------|--------------|--|--------|---|------|--------|

Koppeling horizontaal instelbaar

| | | | | | | |
|----------|----------------|--|--------|---|------|--------|
| F | WSWV 105.390 F | | 125724 | 6 | 1,01 | 10 St. |
|----------|----------------|--|--------|---|------|--------|



Profielklem

| | | | | | | |
|----------|--------|--|--------|--|------|--------|
| F | WSTB 2 | | 125780 | | 0,05 | 50 St. |
|----------|--------|--|--------|--|------|--------|



Scheidingsshot

lengte 3 m

| | | | | | | |
|----------|-------|--|--------|---|------|-----|
| S | RW 85 | | 161248 | 4 | 0,78 | St. |
|----------|-------|--|--------|---|------|-----|

Scheidingsshot

lengte 3 m

| | | | | | | |
|----------|---------|--|--------|---|------|-----|
| F | RW 85 F | | 163248 | 4 | 0,85 | St. |
|----------|---------|--|--------|---|------|-----|

Kortinggroep - HN

| NIEDAX Typennummer | Afmetingen mm HxB | Artikel Nummer | |  P/Stuk |  VPE |
|-----------------------|----------------------|-------------------|--|---|---|
|-----------------------|----------------------|-------------------|--|---|---|

Bocht 90°

| | | | | | |
|---|--------------|-----------|--------|-------|------|
| S | WSBR 105.200 | 105 x 200 | 125002 | 8,31 | Stuk |
| | WSBR 105.300 | 105 x 300 | 125003 | 9,23 | Stuk |
| | WSBR 105.400 | 105 x 400 | 125004 | 10,30 | Stuk |
| | WSBR 105.500 | 105 x 500 | 125005 | 11,08 | Stuk |
| | WSBR 105.600 | 105 x 600 | 125006 | 12,01 | Stuk |



Bocht 90°

| | | | | | |
|---|----------------|-----------|--------|-------|------|
| F | WSBR 105.200 F | 105 x 200 | 125202 | 9,13 | Stuk |
| | WSBR 105.300 F | 105 x 300 | 125203 | 10,16 | Stuk |
| | WSBR 105.400 F | 105 x 400 | 125204 | 11,17 | Stuk |
| | WSBR 105.500 F | 105 x 500 | 125205 | 12,19 | Stuk |
| | WSBR 105.600 F | 105 x 600 | 125206 | 13,21 | Stuk |

T - stuk

| | | | | | |
|---|--------------|-----------|--------|-------|------|
| S | WSTR 105.200 | 105 x 200 | 125042 | 13,24 | Stuk |
| | WSTR 105.300 | 105 x 300 | 125043 | 14,25 | Stuk |
| | WSTR 105.400 | 105 x 400 | 125044 | 15,84 | Stuk |
| | WSTR 105.500 | 105 x 500 | 125045 | 17,75 | Stuk |
| | WSTR 105.600 | 105 x 600 | 125046 | 18,98 | Stuk |



T - stuk

| | | | | | |
|---|----------------|-----------|--------|-------|------|
| F | WSTR 105.200 F | 105 x 200 | 125242 | 14,57 | Stuk |
| | WSTR 105.300 F | 105 x 300 | 125243 | 15,68 | Stuk |
| | WSTR 105.400 F | 105 x 400 | 125244 | 17,42 | Stuk |
| | WSTR 105.500 F | 105 x 500 | 125245 | 19,52 | Stuk |
| | WSTR 105.600 F | 105 x 600 | 125246 | 20,87 | Stuk |

T-aanbouwstuk

| | | | | | |
|---|---------------|-----------|--------|-------|------|
| S | WSTAR 105.200 | 105 x 200 | 125112 | 9,74 | Stuk |
| | WSTAR 105.300 | 105 x 300 | 125113 | 10,10 | Stuk |
| | WSTAR 105.400 | 105 x 400 | 125114 | 10,48 | Stuk |
| | WSTAR 105.500 | 105 x 500 | 125115 | 10,87 | Stuk |
| | WSTAR 105.600 | 105 x 600 | 125116 | 11,19 | Stuk |



T-aanbouwstuk

| | | | | | |
|---|-----------------|-----------|--------|-------|------|
| F | WSTAR 105.200 F | 105 x 200 | 125272 | 10,69 | Stuk |
| | WSTAR 105.300 F | 105 x 300 | 125273 | 11,09 | Stuk |
| | WSTAR 105.400 F | 105 x 400 | 125274 | 11,50 | Stuk |
| | WSTAR 105.500 F | 105 x 500 | 125275 | 11,93 | Stuk |
| | WSTAR 105.600 F | 105 x 600 | 125276 | 12,29 | Stuk |

Aanzethoekstuk

| | | | | | |
|---|------------|-----|--------|------|------|
| S | WAER 105 | 105 | 125711 | 4,13 | Stuk |
| F | WAER 105 F | 105 | 125741 | 4,53 | Stuk |



Aaround Kabelladder

Aaround kabelladder met gesloten boomprofiel

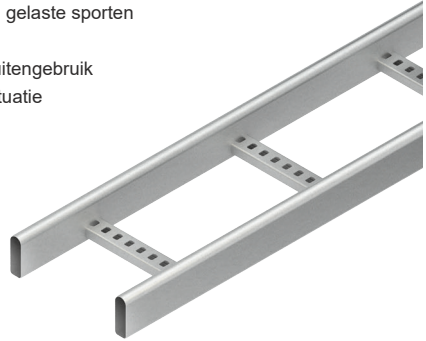
Aaround kabelladder de gesloten boomprofielen maken het verschil onder de standaard ladders

Hoge mechanische stevigheid door optimale materiaalvorm en gelaste sporten

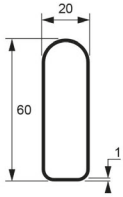
Hoge belasting bij grote ondersteuningsafstand

Breed inzetbaar in industrie en utiliteit voor zowel binnen- als buitengebruik

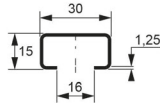
Compleet systeem met hulpstukken en toebehoren voor elke situatie



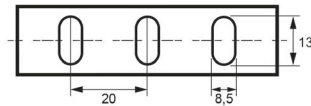
Zijwand - Doorsnede



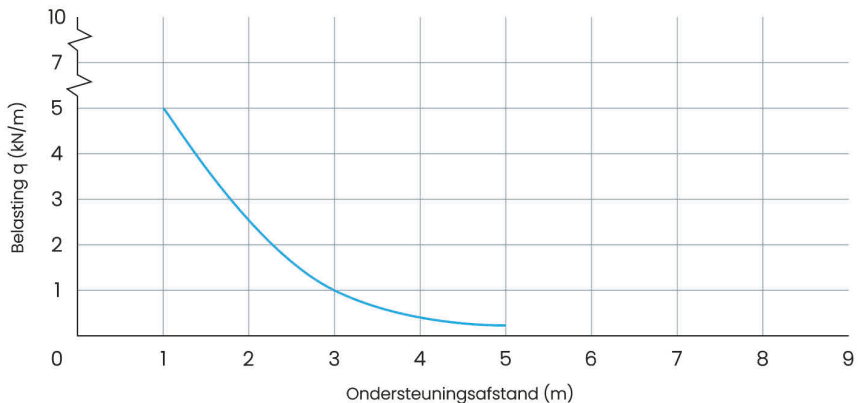
Sport - Doorsnede



Sport - Bovenaanzicht



Belastingsdiagram



Belastingsdiagram q = gelijkmatig verdeelde kabelbelasting (getest volgens DIN EN IEC 61537).
De in het diagram weergegeven belastingspecificaties zijn onafhankelijk van de locatie van de connector.

Alround Kabelladder

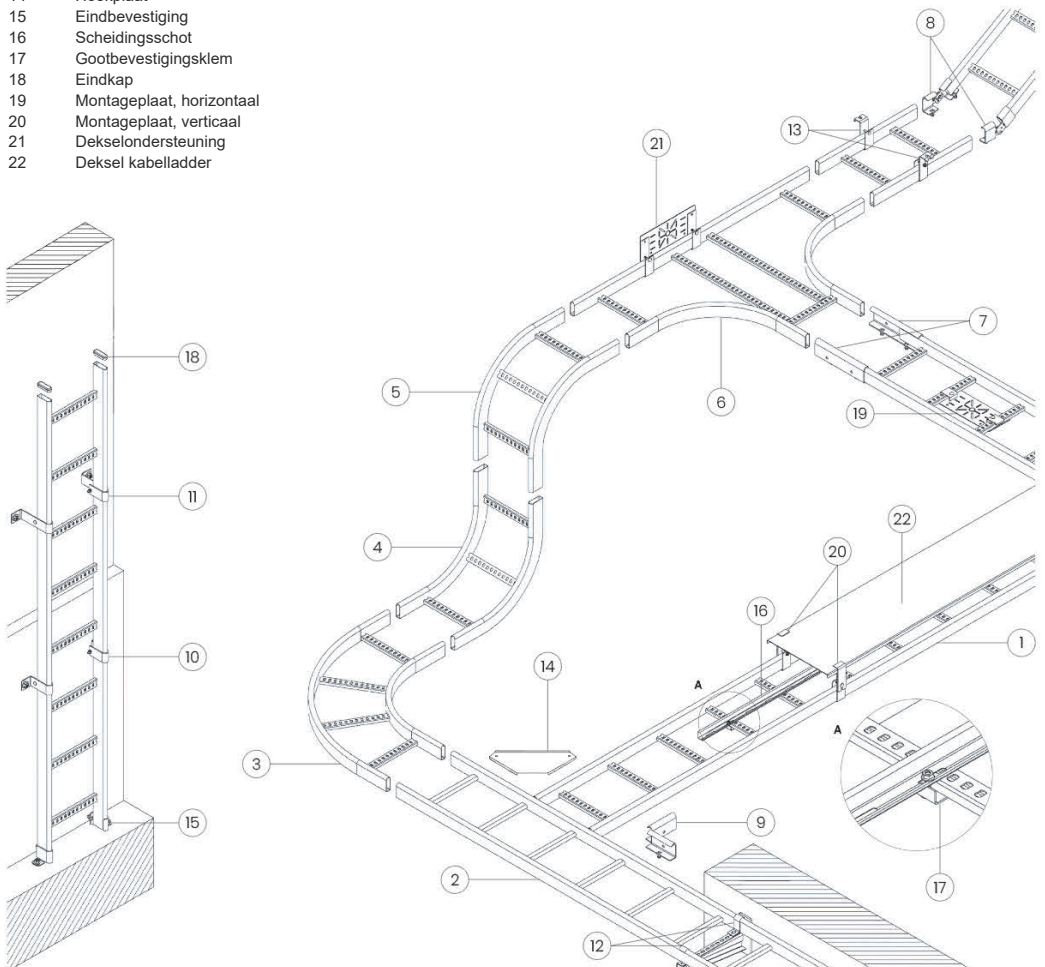
Fig. Product

Kabelladder


- 1 VC60 Kabelladder
- 2 VO60 Kabelladder
- 3 VC60 Binnenbocht 90°
- 4 VC60 Stijgstuk
- 5 VC60 Vervalstuk
- 6 VC60 T-stuk

Bevestigingsmateriaal

- 7 Koppeling, recht
- 8 Koppeling, universeel instelbaar
- 9 Aftakhaak
- 10 Wandbevestiging, 94x40 mm
- 11 Wandbevestiging, 144x40 mm
- 12 Profielklem
- 13 Pendelhaak
- 14 Hoekplaat
- 15 Eindbevestiging
- 16 Scheidingsschot
- 17 Gootbevestigingsklem
- 18 Eindkap
- 19 Montageplaat, horizontaal
- 20 Montageplaat, verticaal
- 21 Dekselondersteuning
- 22 Deksel kabelladder



Around Kabelladder

| Typennummer | Afm. mm B x H | Art. nummer | |  stuk/m |  VPE | Korting groep |
|-------------|---------------------|----------------|--|--|---|------------------|
|-------------|---------------------|----------------|--|--|---|------------------|

Kabelladder VC60 geperforeerde C - sport (vulhoogte 40 mm) lengte 3 m

| | | | | | | |
|---|-----------------|----------|--------------|------|-----|----|
| F | Kabelladder 100 | 60 x 100 | 40011 | 2,67 | 6 m | HA |
| | Kabelladder 200 | 60 x 200 | 40012 | 2,94 | 6 m | HA |
| | Kabelladder 300 | 60 x 300 | 40013 | 3,21 | 6m | HA |
| | Kabelladder 400 | 60 x 400 | 40014 | 3,48 | 6m | HA |
| | Kabelladder 500 | 60 x 500 | 40015 | 3,74 | 6m | HA |
| | Kabelladder 600 | 60 x 600 | 40016 | 4,01 | 6m | HA |

Binnenbocht 90° VC 60 geperforeerde C - sport

| | | | | | | |
|---|-----------------|----------|--------------|------|--------|----|
| F | Binnenbocht 100 | 60 x 100 | 41021 | 2,30 | p/stuk | HA |
| | Binnenbocht 200 | 60 x 200 | 41022 | 2,80 | p/stuk | HA |
| | Binnenbocht 300 | 60 x 300 | 41023 | 3,20 | p/stuk | HA |
| | Binnenbocht 400 | 60 x 400 | 41024 | 4,00 | p/stuk | HA |
| | Binnenbocht 500 | 60 x 500 | 41025 | 4,50 | p/stuk | HA |
| | Binnenbocht 600 | 60 x 600 | 41026 | 5,60 | p/stuk | HA |

Buitenbocht 90° VC 60 geperforeerde C - sport

| | | | | | | |
|---|-----------------|----------|-------|------|--------|----|
| F | Buitenbocht 100 | 60 x 100 | 41031 | 3,10 | p/stuk | HA |
| | Buitenbocht 200 | 60 x 200 | 41032 | 4,20 | p/stuk | HA |
| | Buitenbocht 300 | 60 x 300 | 41033 | 5,20 | p/stuk | HA |
| | Buitenbocht 400 | 60 x 400 | 41034 | 6,50 | p/stuk | HA |
| | Buitenbocht 500 | 60 x 500 | 41035 | 8,50 | p/stuk | HA |
| | Buitenbocht 600 | 60 x 600 | 41036 | 9,60 | p/stuk | HA |

Stijgstuk 90° VC60 geperforeerde C - sport

| | | | | | | |
|---|---------------|----------|--------------|------|--------|----|
| F | Stijgstuk 100 | 60 x 100 | 41001 | 1,90 | p/stuk | HA |
| | Stijgstuk 200 | 60 x 200 | 41002 | 2,10 | p/stuk | HA |
| | Stijgstuk 300 | 60 x 300 | 41003 | 2,30 | p/stuk | HA |
| | Stijgstuk 400 | 60 x 400 | 41004 | 2,50 | p/stuk | HA |
| | Stijgstuk 500 | 60 x 500 | 41005 | 2,80 | p/stuk | HA |
| | Stijgstuk 600 | 60 x 600 | 41006 | 3,00 | p/stuk | HA |



Vervalstuk 90° VC60 geperforeerde C - sport

| | | | | | | |
|---|----------------|----------|--------------|------|--------|----|
| F | Vervalstuk 100 | 60 x 100 | 41011 | 1,90 | p/stuk | HA |
| | Vervalstuk 200 | 60 x 200 | 41012 | 2,10 | p/stuk | HA |
| | Vervalstuk 300 | 60 x 300 | 41013 | 2,30 | p/stuk | HA |
| | Vervalstuk 400 | 60 x 400 | 41014 | 2,50 | p/stuk | HA |
| | Vervalstuk 500 | 60 x 500 | 41015 | 2,80 | p/stuk | HA |
| | Vervalstuk 600 | 60 x 600 | 41016 | 3,00 | p/stuk | HA |

T - Stuk VC60 geperforeerde C - sport

| | | | | | | |
|---|------------|----------|--------------|------|--------|----|
| F | T-Stuk 100 | 60 x 100 | 41041 | 3,40 | p/stuk | HA |
| | T-Stuk 200 | 60 x 200 | 41042 | 4,10 | p/stuk | HA |
| | T-Stuk 300 | 60 x 300 | 41043 | 4,80 | p/stuk | HA |
| | T-Stuk 400 | 60 x 400 | 41044 | 5,60 | p/stuk | HA |
| | T-Stuk 500 | 60 x 500 | 41045 | 6,30 | p/stuk | HA |
| | T-Stuk 600 | 60 x 600 | 41046 | 7,00 | p/stuk | HA |

Around Kabel ladder

| Typenummer | Afm. mm B x H | Art. nummer | |  kg stuk/m |  VPE | Korting groep |
|------------|---------------------|----------------|--|--|---|------------------|
|------------|---------------------|----------------|--|--|---|------------------|

Koppeling VOC60, recht

| | | | | | | | |
|----------|-----------|----|--------------|--|------|--------|----|
| F | Koppeling | 61 | 41203 | | 0,69 | 10 St. | HA |
|----------|-----------|----|--------------|--|------|--------|----|

Koppeling VOC60, universeel instelbaar horizontaal en verticaal

| | | | | | | | |
|----------|-----------|----|--------------|--|------|--------|----|
| F | Koppeling | 61 | 41204 | | 0,34 | 10 St. | HA |
|----------|-----------|----|--------------|--|------|--------|----|

Wandbevestiging VOC60

| | | | | | | | | |
|----------|-----------------|----|-----|--------------|--|------|--------|----|
| F | Wandbevestiging | 25 | 94 | 41230 | | 0,22 | 10 St. | HA |
| | Wandbevestiging | 75 | 144 | 41231 | | 0,27 | 10 St. | HA |

Aftakhaak VOC60

| | | | | | | | |
|----------|-----------|----|--------------|--|------|--------|----|
| F | Aftakhaak | 61 | 41221 | | 0,69 | p/stuk | HA |
|----------|-----------|----|--------------|--|------|--------|----|

Profielklem VOC60, inclusief bevestigingsmateriaal

| | | | | | | | |
|----------|-------------|----|--------------|--|------|--------|----|
| F | Profielklem | 57 | 41235 | | 0,10 | 10 St. | HA |
|----------|-------------|----|--------------|--|------|--------|----|

Pendelhaak VOC60

| | | | | | | | |
|----------|------------|-----|--------------|--|------|--------|----|
| F | Pendelhaak | 114 | 41220 | | 0,25 | 10 St. | HA |
|----------|------------|-----|--------------|--|------|--------|----|

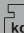

Eindbevestiging VOC60

| | | | | | | | |
|----------|-----------------|----|--------------|--|------|--------|----|
| F | Eindbev. links | 61 | 41225 | | 0,18 | 10 St. | HA |
| | Eindbev. rechts | 61 | 41226 | | 0,18 | 10 St. | HA |

Scheidingschot VOC/ VOT incl. 3 houders per lengte lengte 3 m

| | | | | | | | |
|----------|----------------|---------|--------------|--|------|----|----|
| F | Scheidingschot | 30 x 25 | 41500 | | 0,54 | 3m | HA |
|----------|----------------|---------|--------------|--|------|----|----|

Around Kabelladder

| Typenummer | Afm. mm B x H | Art. nummer | |  kg stuk/m |  VPE | Korting groep |
|------------|---------------------|----------------|--|--|---|------------------|
|------------|---------------------|----------------|--|--|---|------------------|



Gootbevestigingsklem VOC/ VOT, inclusief bevestigingsmateriaal

| | | | | | | | |
|----------|-----------|--|--------------|--|------|--------|----|
| F | Bev. klem | | 41252 | | 0,03 | 10 St. | HA |
|----------|-----------|--|--------------|--|------|--------|----|



Eindkap VOC/ VOT, voor boomprofiel.

| | | | | | | | |
|----------|------------------|---------|--------------|--|------|-----------|----|
| K | Eindkap 60 | 60 x 20 | 41245 | | 0,01 | 10/50 St. | HA |
| | Eindkap 60 blauw | 60 x 20 | 41247 | | 0,01 | 10/50 St. | HA |



Montageplaat VOC/ VOT, horizontaal

| | | | | | | | |
|----------|--------------|--|--------------|--|------|-------|----|
| F | Montageplaat | | 41250 | | 0,82 | 5 St. | HA |
|----------|--------------|--|--------------|--|------|-------|----|



Montageplaat VOC/ VOT, verticaal

| | | | | | | | |
|----------|--------------|--|--------------|--|------|-------|----|
| F | Montageplaat | | 41251 | | 0,82 | 5 St. | HA |
|----------|--------------|--|--------------|--|------|-------|----|



Zinkcompound, spuitbus 0,4 liter

| | | | | | | |
|--------------|-------|--------------|--|--|--------|----|
| Zinkcompound | Mat | 82980 | | | p/stuk | HA |
| Zinkcompound | Glans | 82981 | | | p/stuk | HA |

by



Niedax Kleinhuis BV
Bijsterhuizen 20-05A
6604 LH Wijchen
Tel: +31 (0) 24 3788533
info@niedax.nl | www.niedax.